



**Floating
Production
Storage
& Offloading (FPSO)
Inspection System for
Conoco Phillips-China**

Steve Van Meter
Certified VideoRay Consultant

FPSO Nan Hai Kai Tuo Training Mission July 2007

- **VideoRay Operator Training for FPSO Crew**
- **Anchor Line Attachment Points Inspection**
- **South China Sea**
- **FPSO On Location since 2000**
- **80 NM SE of Hong Kong**
- **Vessel 590' LOA**
- **Crew of 70**

South China Sea COP-C Oil Rigs



FPSO Layout



Buoy Anchor Turret

**Power
Plant**

Production Units

Off Loading Pipe

FPSO RISER LAYOUT

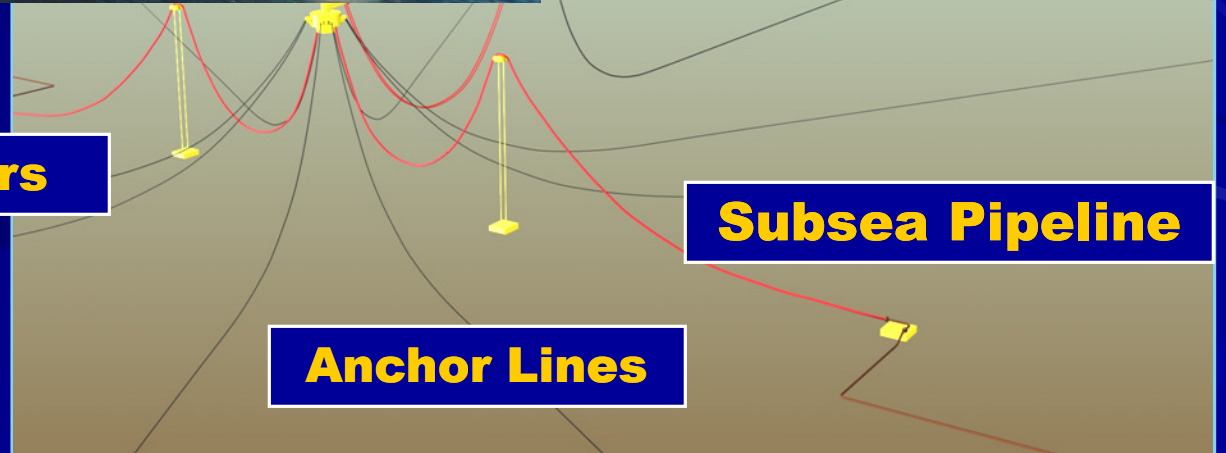


Buoy

Risers

Subsea Pipeline

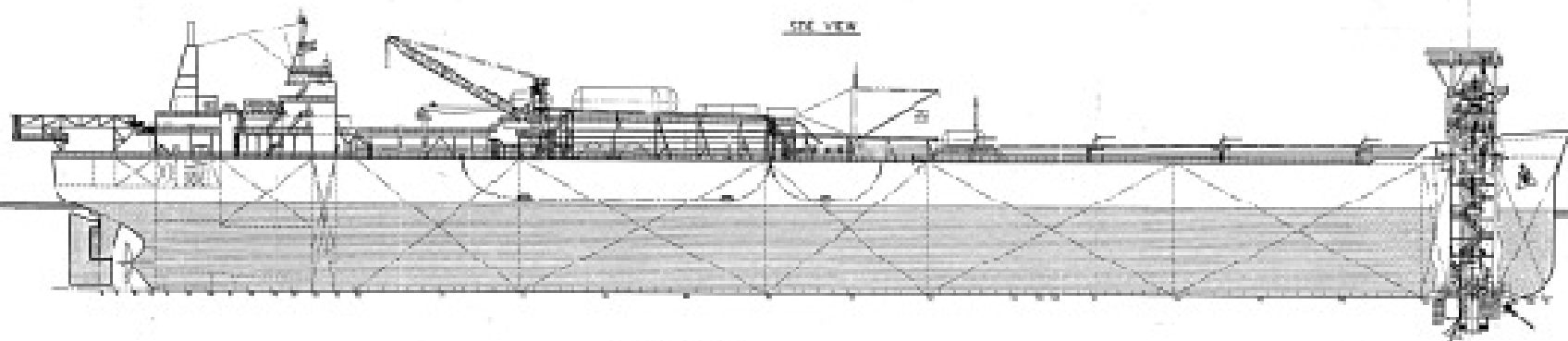
Anchor Lines



FPSO Anchor Turret

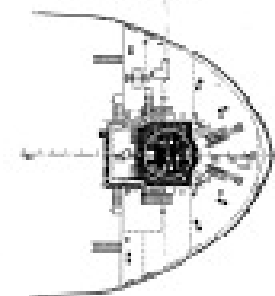
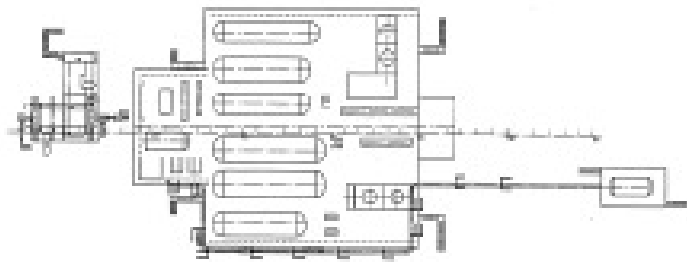


FPSO Plot Plan

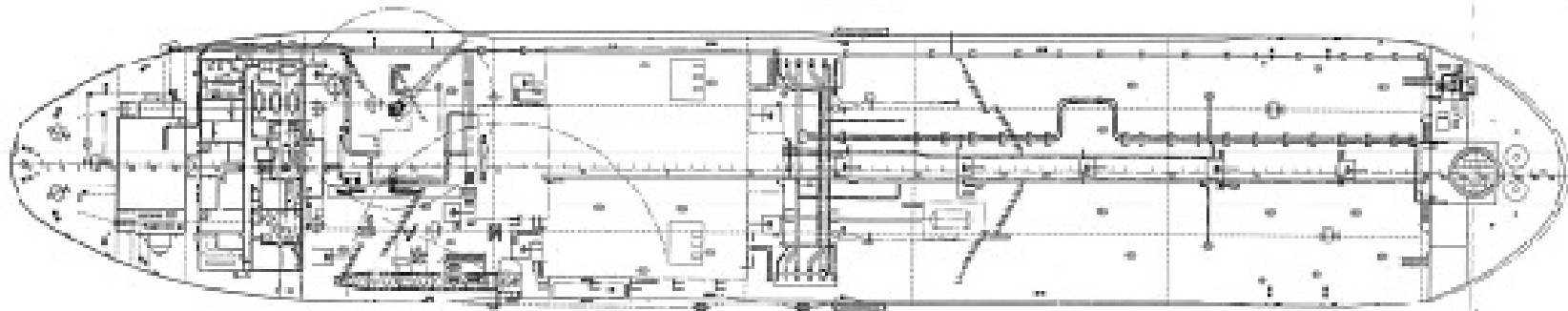


PROCESS DECK

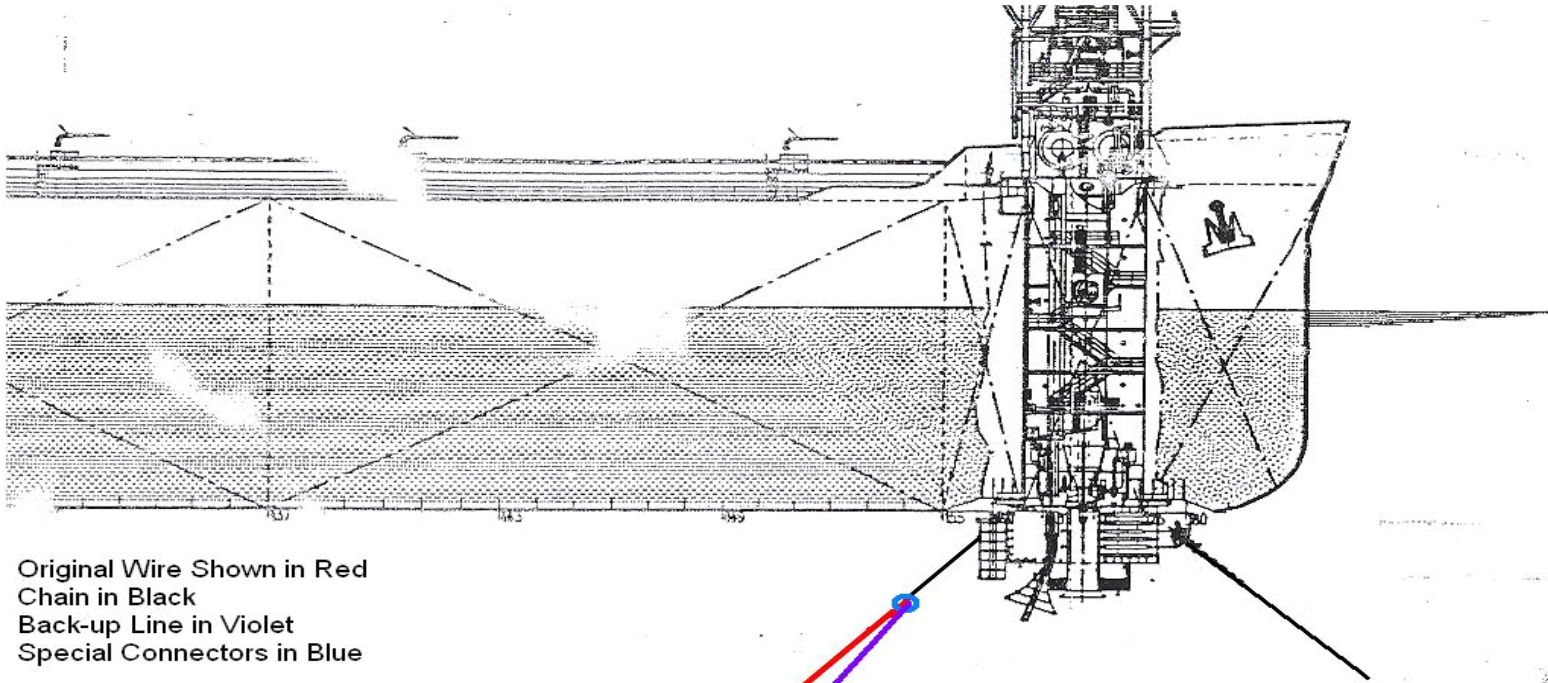
LOOK CASTLE DECK



PLAN VIEW



FPSO Anchor Turret



Original Wire Shown in Red
Chain in Black
Back-up Line in Violet
Special Connectors in Blue

Minimum tension in Back-up Line

Water depth 110 meters

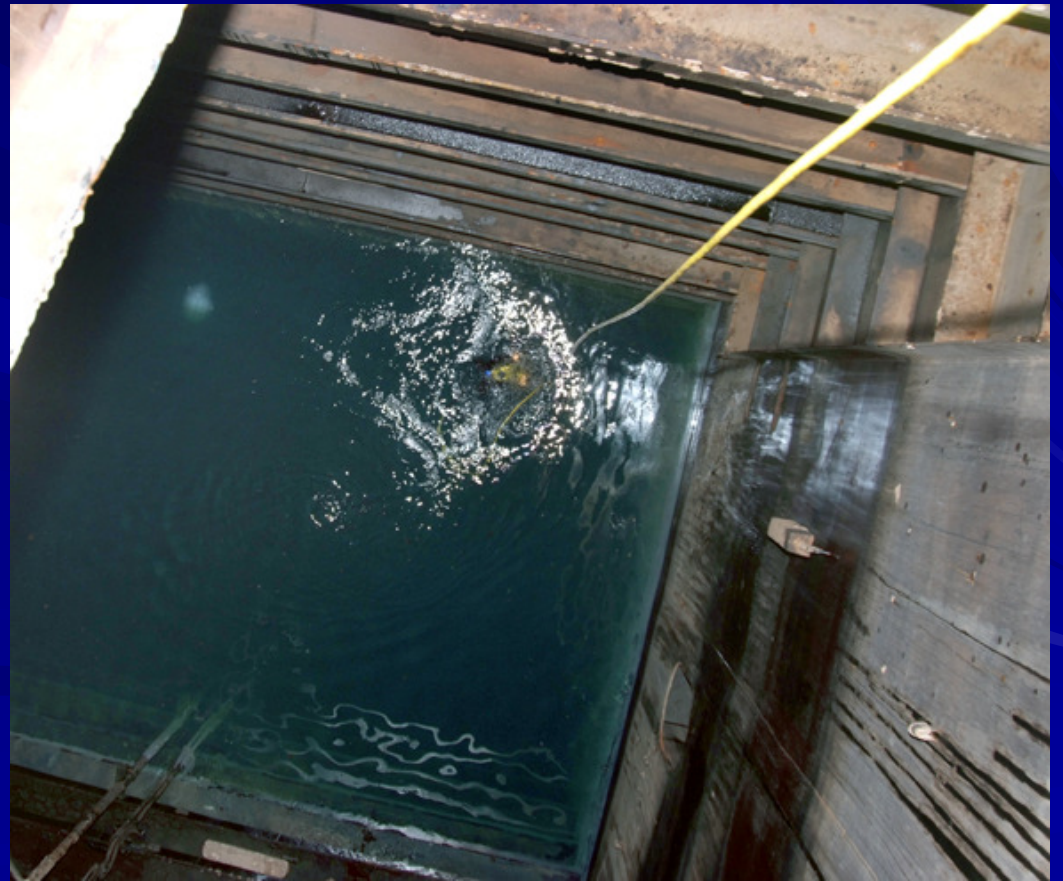
For Clarity Risers not shown in this sketch

Out of a total 8 Mooring Legs only two,
Nos 4 and 5, show signs of deterioration

Basic Operator Training



Ballast Tanks Used for Initial Training



Training Dive into 30" Riser



Riser Tube Video



**High
Quality
Helicopter
Transport
System
For Crew
Transfer
& FPSO
Ops**



**Strong
Safety
Culture**

-

**Personal
Responsibility**



**Ship
Life**





**COP-C
Recognized
Potential
For
VideoRay
To
Support
Other
Missions**



**Happy
Crew**

nocophillips

Watch Your Finger!
当心夹手!

Chinese Words Into English

**“What Ever
It Takes!”**

**Steve Van Meter
Consulting
248 City Point Rd.
Cocoa, Florida 32926
321-431-0602**