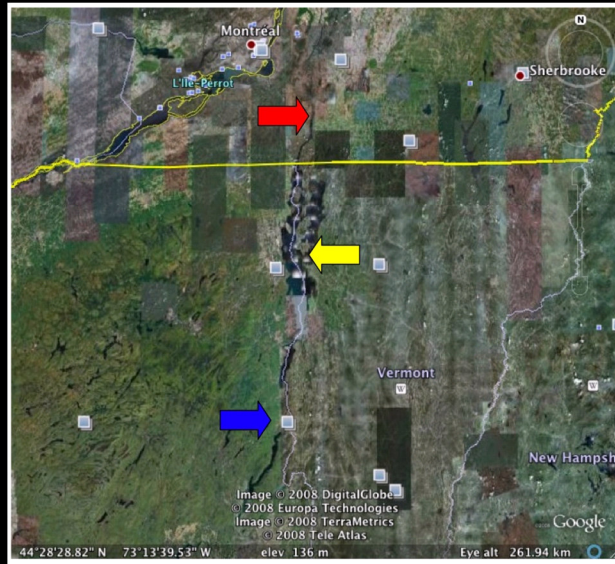


# Shipwreck Exploration

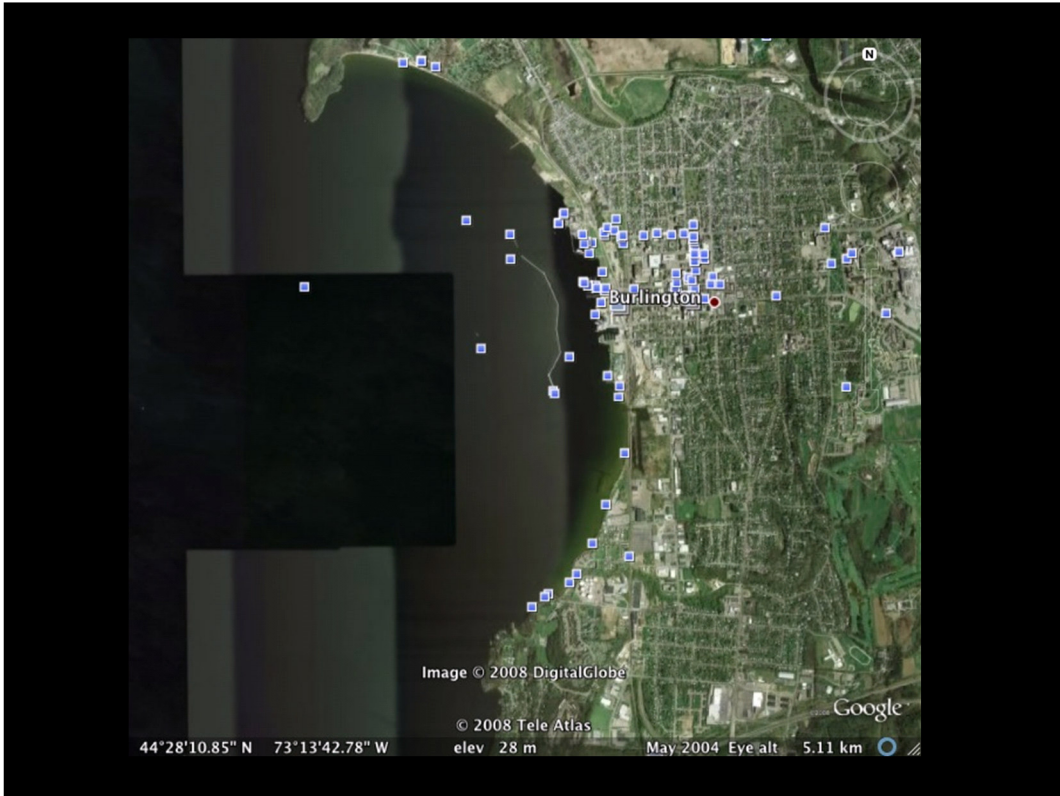
Tips, tricks and lessons learned  
while running ROV supported  
public tours on Lake Champlain

[www.shipwrecktour.com](http://www.shipwrecktour.com)



--One of the first commercial companies to take the general public to shipwreck sites and use an ROV for real-time exploration

--Operate out of Burlington, VT on Lake Champlain on wrecks that are part of the Underwater Historic Preserve, a joint program of Vermont and New York States' Historic Preservation Departments



--Burlington Bay outside the breakwater



26' center console Angler Panga I/O



Ray Marine E-series sunlight readable screen and digital depth sounder



VideoRay Explorer



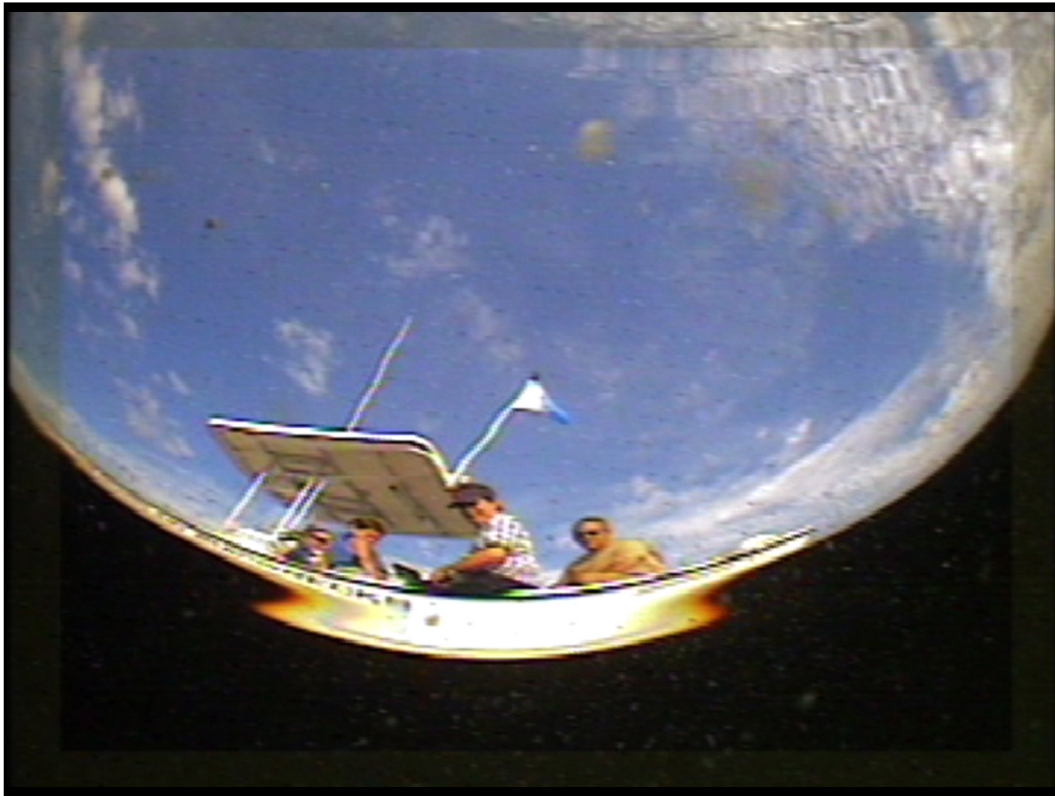
- Radio Shack distribution amplifier...need to have a spare handy, one per season.
- Looking for other options
- Other equipment: digital video camera, no polarized glasses, shade screens

# Lynn T-38



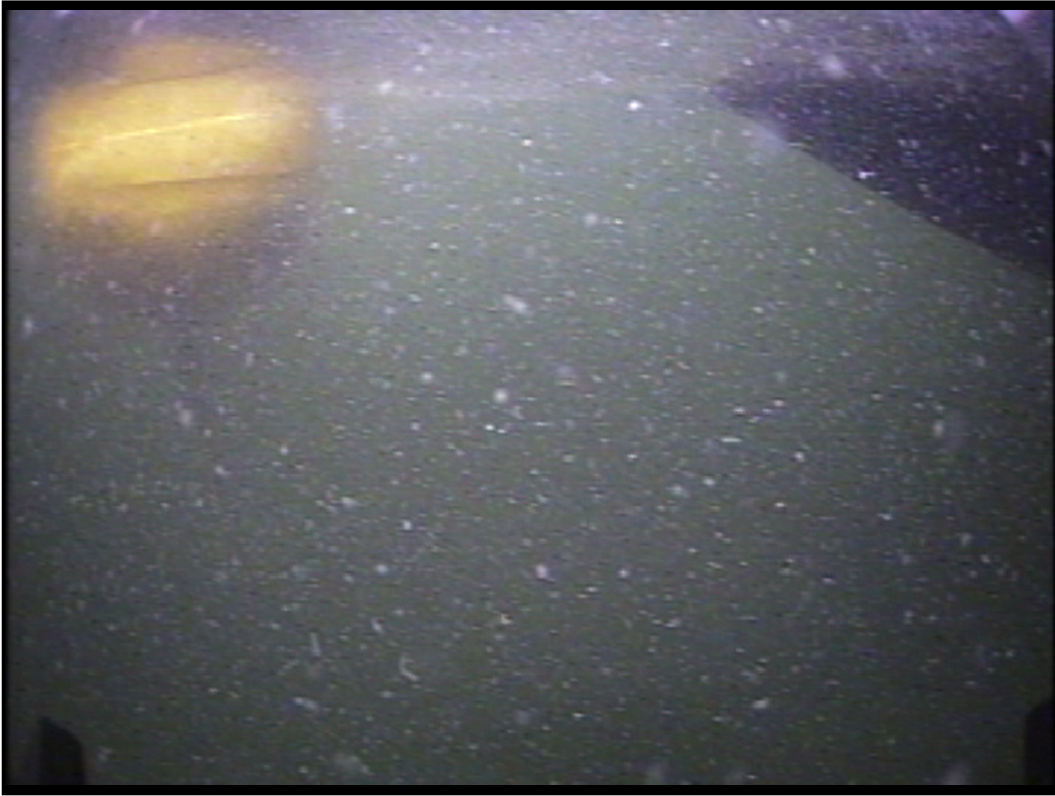
Lynn T-38 (insert Bengt Sahlberg's presentation notes introducing Lynn technology here...)





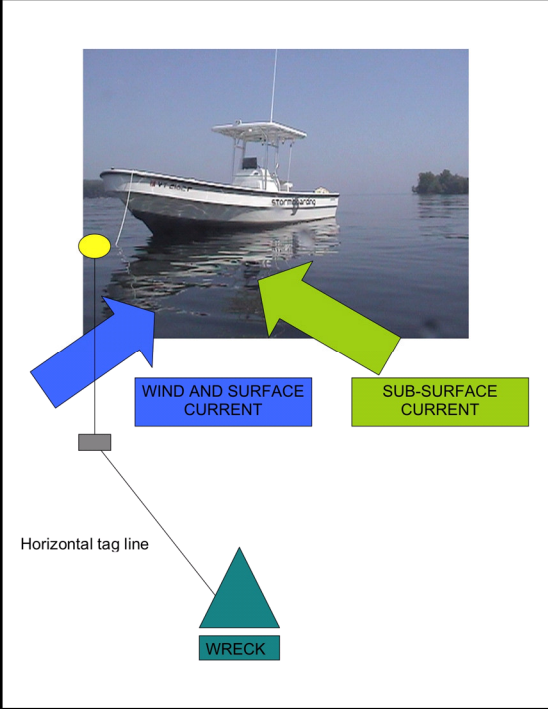
## LAUNCH, DIVE, RECOVERY AND TETHER HANDLING

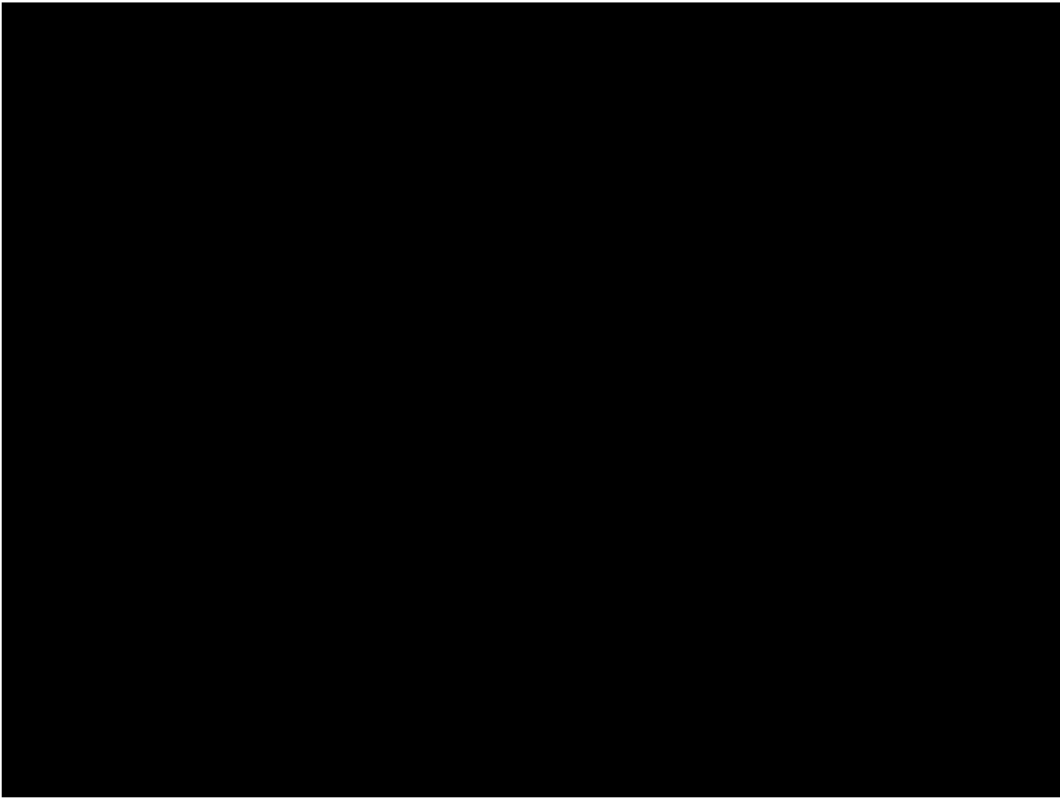
- Pre-dive check: gets people excited and ensures everything is working properly before descending
- If something is not working: most often a plug partially unplugged
- if not, re-boot
- One it was the ROV whip



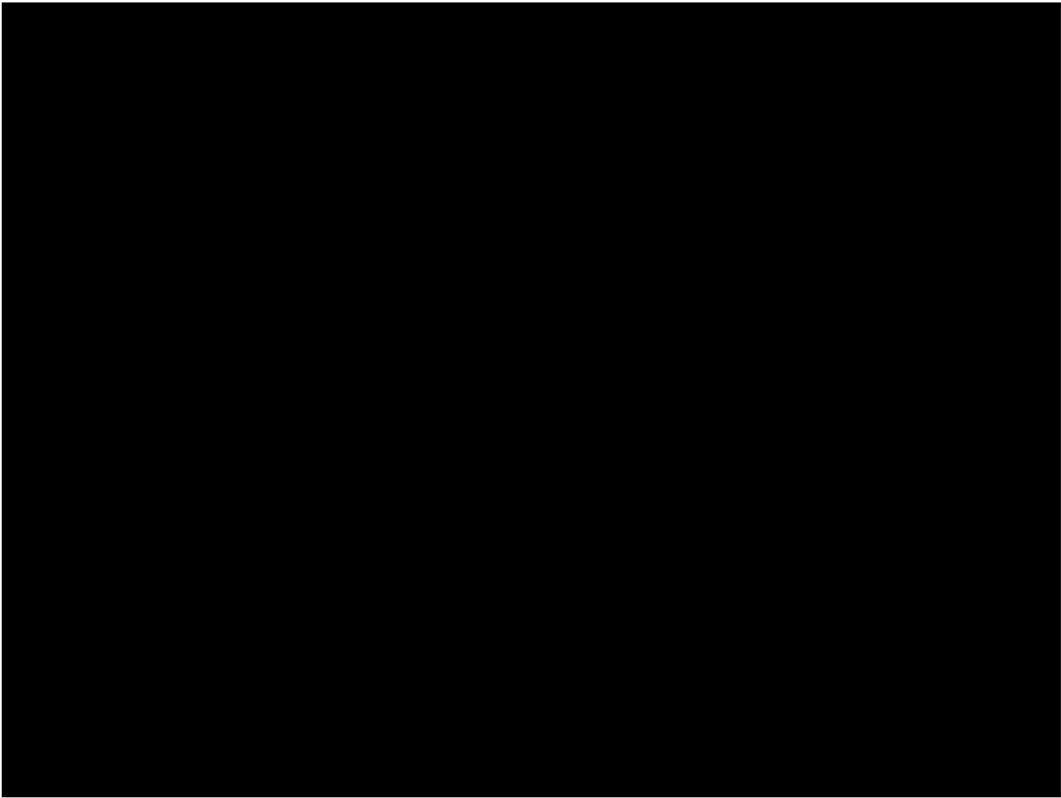
#### DROPPING DOWN THE MOORING LINE

Tie as close to the mooring buoy as conditions allow (close in flat water,  
Have to leave more line in lumpy seas





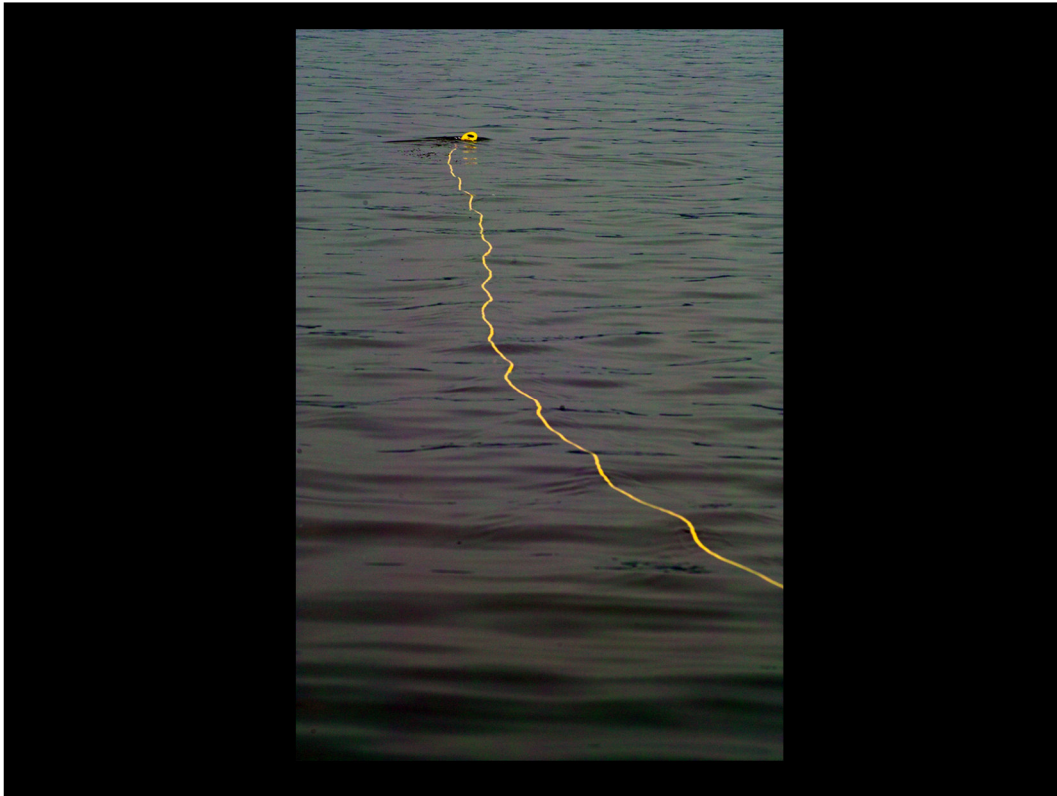
Descending mooring with current opposite to the wind



- Pace: feature to feature speed
- Balance verbal and visual information



Llyn improvement



Tilt camera up

ROV weighted to rise as we fly forward so going forward as well as up speeds the ascent

# Post Dive Check



## Lessons Learned: Routine is best and simple better



Keep it simple and as pre-assembled as possible: control box and tool box ready, no clutter

- Next: The Pro IV
- And after that... Sonar: Blueview, Starfish

## Coming to Vermont?

- [www.shipwrecktour.com](http://www.shipwrecktour.com)
- 802-578-6120
- rachael@shipwrecktour.com