



**Lake Champlain
survey**

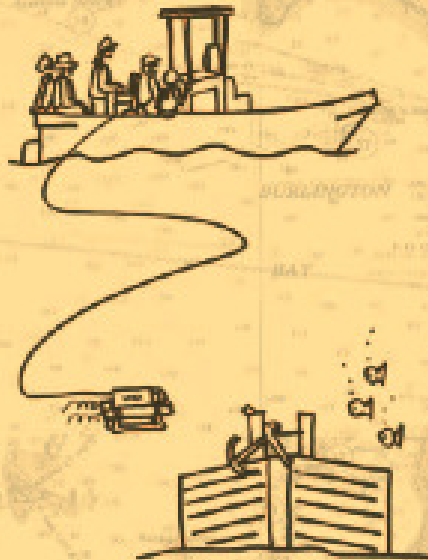
shipwreck

**challenges, solutions
and some cool stories**

rachael miller

shipwrecktour.com

SHIPWRECK TOUR

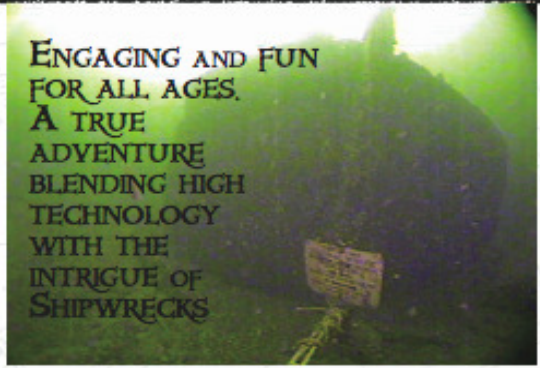


WHERE HIGH TECH MEETS HISTORY

EXPLORE LAKE CHAMPLAIN'S
AMAZING, INTACT WRECKS
FROM THE 1800'S THROUGH
THE EYES OF A ROBOTIC
CAMERA. A FUN AND UNIQUE
OUTING FOR ALL AGES

TO BOOK, 802-578-6120
WWW.SHIPWRECKTOUR.COM

SHIPWRECK TOUR



ENGAGING AND FUN
FOR ALL AGES.
A TRUE
ADVENTURE
BLENDING HIGH
TECHNOLOGY
WITH THE
INTRIGUE OF
SHIPWRECKS

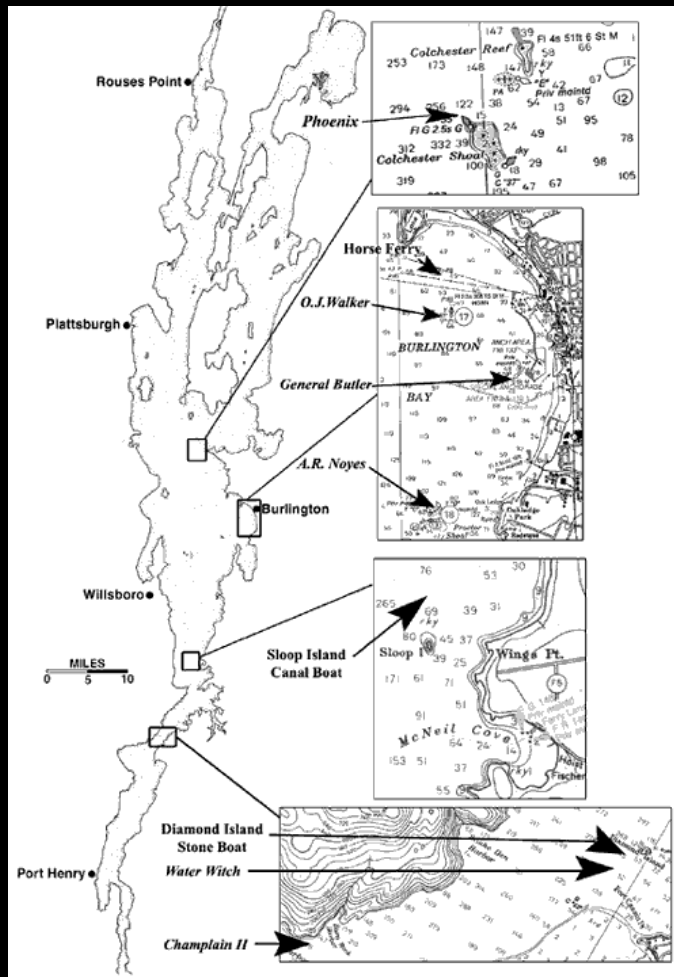


COST: \$18 PER PERSON FOR THE
1 HOUR TOUR
CUSTOM TOURS AVAILABLE.

DEPARTS SLIP 35 AT THE
BURLINGTON BOATHOUSE
(IN FRONT OF ECHO)
7 DAYS/WEEK BY APPOINTMENT

TO BOOK, 802-578-6120
WWW.SHIPWRECKTOUR.COM

Lake Champlain Underwater Historic Preserve



- 9 wrecks
- Free and open to the public
- Within safe recreational diving limits
- Mostly merchant ships from 1800's

Equipment



- 27' Panga I/O
- House bank/800w inverter
- Deep Blue/Explorer
- Tritech SeaSprite
- Neutral tether
- Radio Shack powered splitter
- Pinnacle Video Transfer with 16G thumb drive
- Ray Marine E Series sunlight readable screen

The Burlington Horse Ferry Fragile



- 50-60' of water
- Low-moderate current
- One of a kind
- Paddlewheel spokes extremely fragile
- Scuttled between 1820-1840

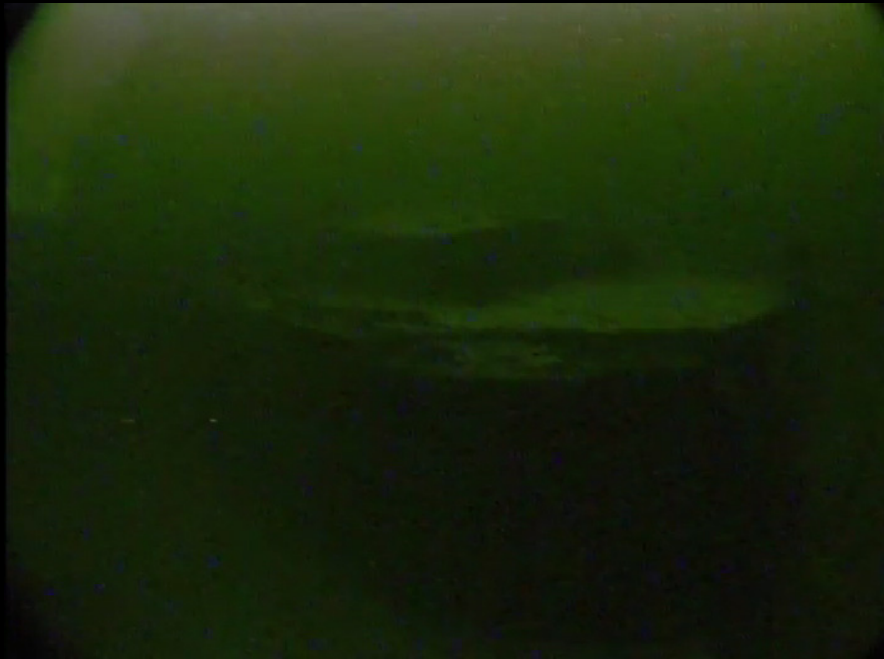


Solutions



- Neutral tether
- Planned route
- 90 degree navigation
- Depth control
- Just enough tether
- Tether checks

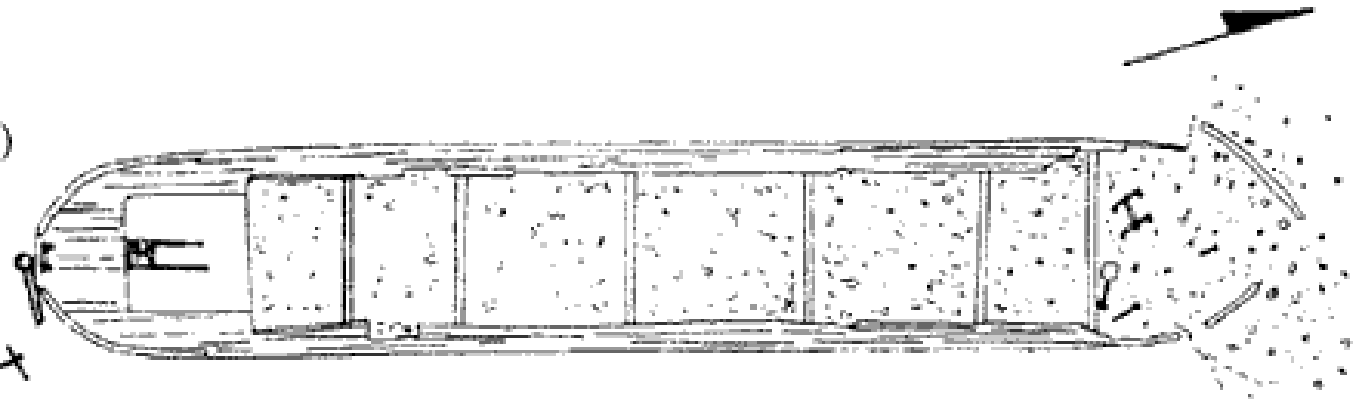
A.R. Noyes - Coal Barge Darkness



- 60-80' of water
- Moderate current
- Very dark
- Sharp, jagged structure
- Fell off the tow and sank October 1884

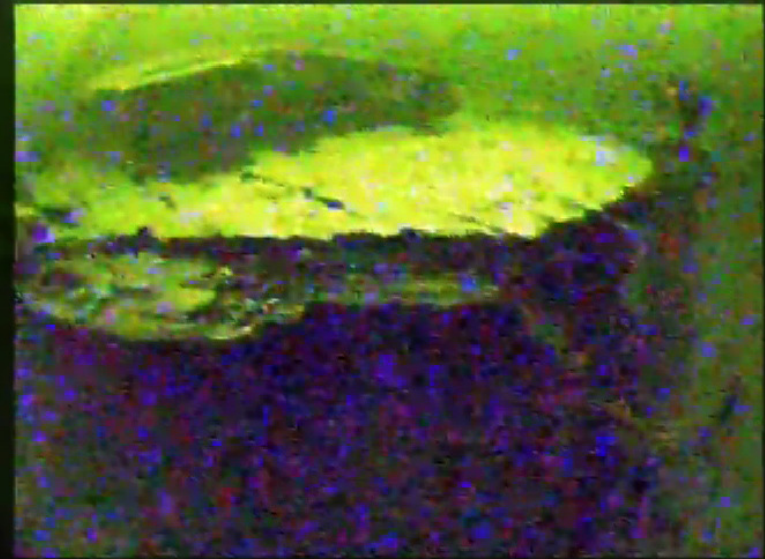
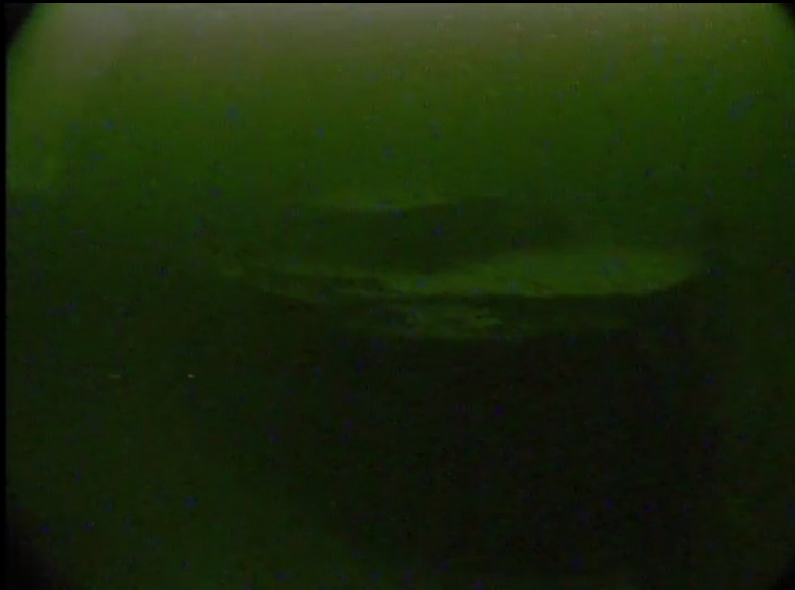
Stern (60' depth)

Anchor
Pad

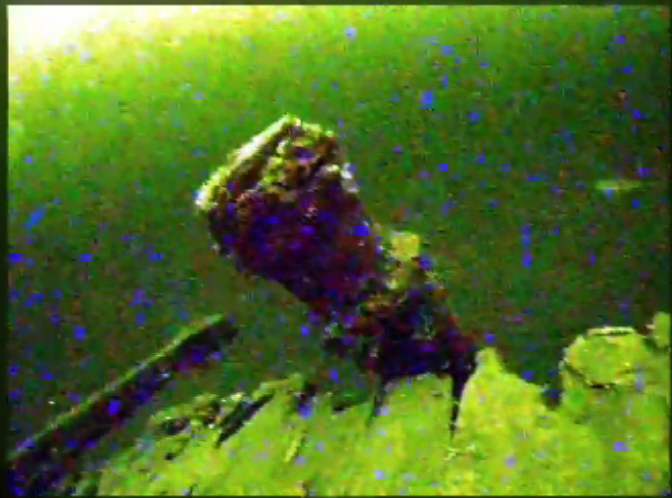


Bow
(80' depth)

Solutions:



- Llyn Image Enhancement



- Stay close
- Move slow



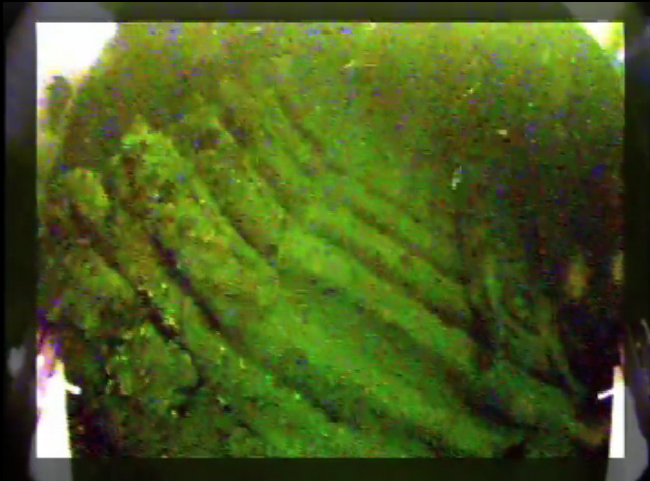
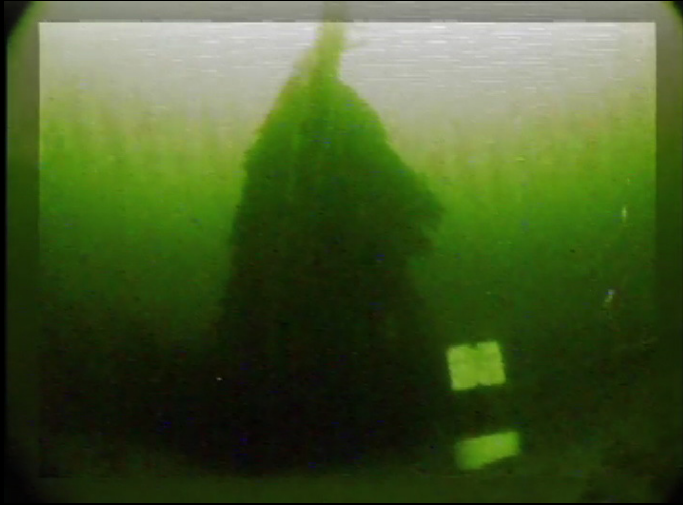


Phoenix - Steamboat Current and Low Visibility



- 60-110' of water
- In open lake
- Moderate-strong current
- Low visibility
- Sunk by fire: 1819, suspected arson

Solutions



- Extra tether
- Stay very, very close
- Plan on viewing sections each dive rather than whole boat



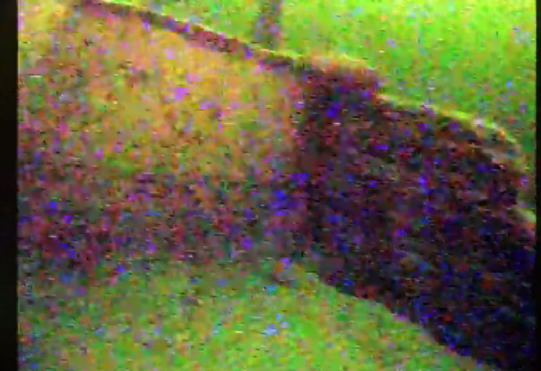
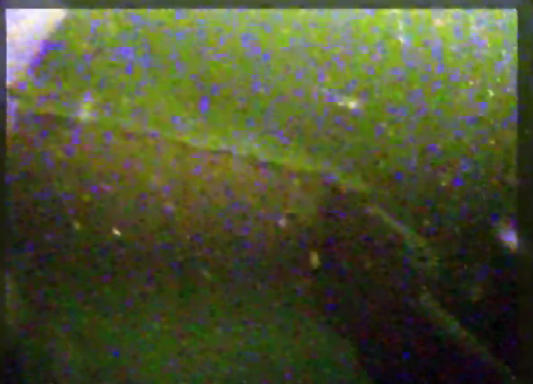
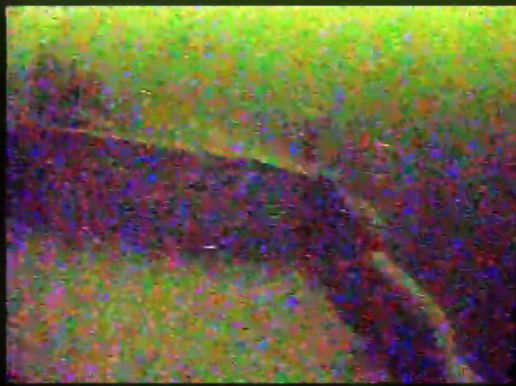
Waterwitch - Schooner Current and Low Visibility



- 90' of water
- Strong current
- At mouth of river
- Very low visibility
- Steamboat converted into schooner
- Sunk in gale, April 1866

Solutions

- Need a lot of tether
- Good comm
between pilot and
tether handler
- Must get very close
to target
- Once there, stay
there and move
slowly
- Explore small
section thoroughly,
ascend and repeat
on next section



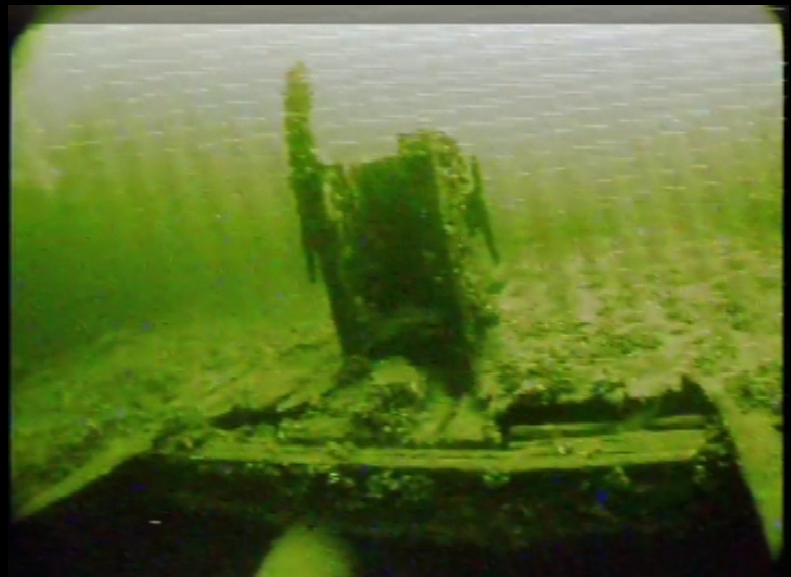
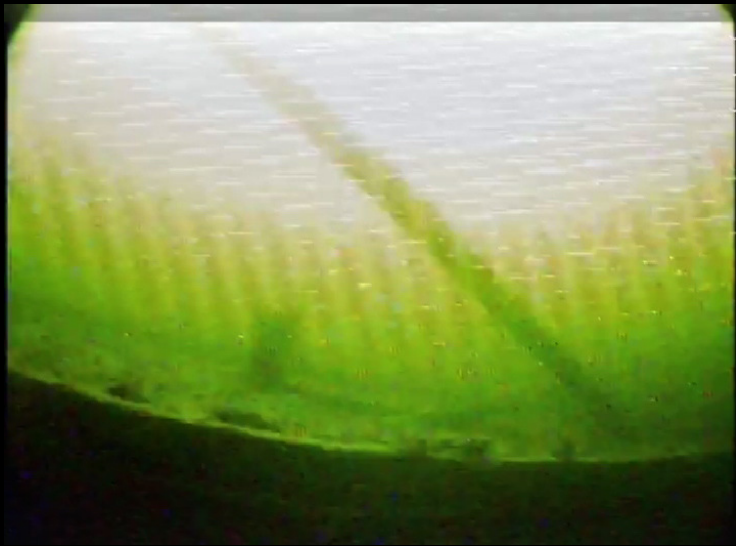
- Experiment with lights and Lyynification while focusing on one feature
- Be ready to adjust as you fly along

- What NOT to do
- In this case...
 - Too far away from features
 - Moving around too fast rather than focusing on a feature
 - Worst: trying to turn around by turning (must reverse first then turn)

OJ Walker - Canal Schooner Obstacles



- 65-75' of water
- Low-moderate current
- Masts at odd angles
- Very fragile wheel spokes
- Sunk by weather and captain's laziness in May 1895



Solutions:



- Planned route
- Go slow
- Use compass
- Use boat structure as guide
- Consider current
- Be ready to follow tether back

Wildlife





16-SEP-09
14:34:43

D:009.9F
H:066



16-SEP-09
14:34:46

D:010.1F
H:182





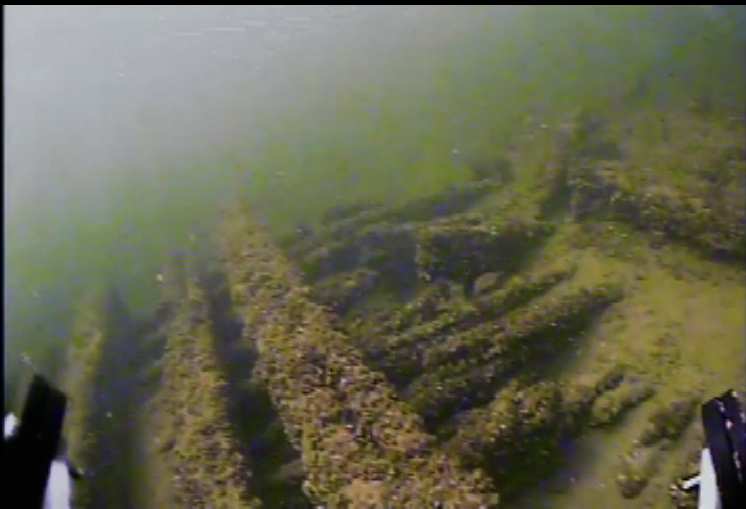
Champlain II - Luxury Steamboat



- 15-35' of water
- 163' of original 244' of boat length remains
- Sunk by stupidity
July 1875







Lessons Learned



- Bring everything you could possibly need every outing
 - Down weights
 - Extra tether
- Go slow
- Stay close
- If alone, rest on bottom to handle tether or explore section by section - ascend and retrieve tether between each dive

When in Vermont...



www.shipwrecktour.com

802-578-6120

rachael@shipwrecktour.com