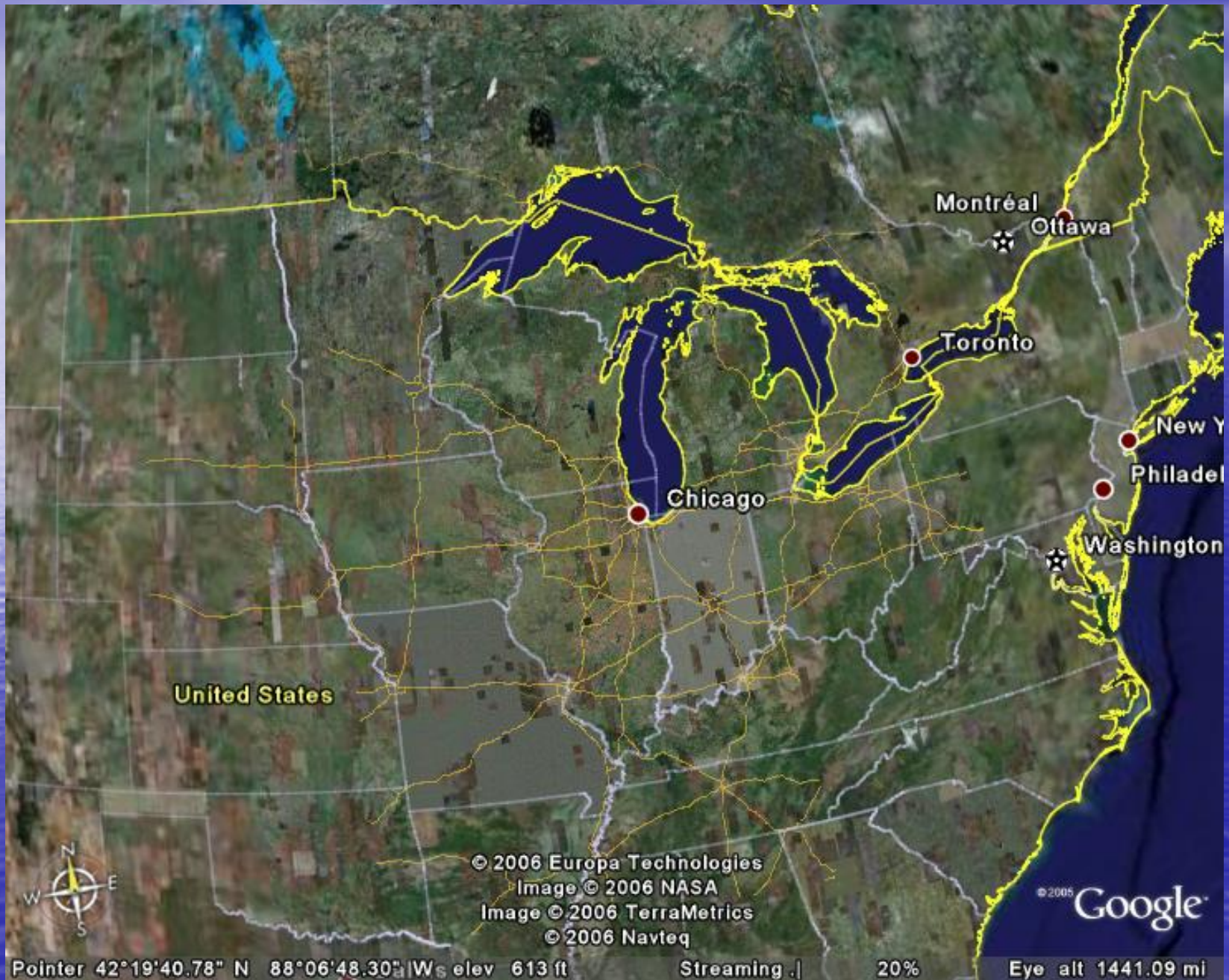


St. Louis County Sheriff's Rescue Squad

Conducting Efficient and
Successful Search & Rescue
Missions with an ROV



United States

Montréal
Ottawa

Toronto

Chicago

New York
Philadelph

Washington

© 2006 Europa Technologies
Image © 2006 NASA
Image © 2006 TerraMetrics
© 2006 Navteq

© 2005 Google

Pointer 42°19'40.78" N 88°06'48.30" W elev 613 ft Streaming | 20% Eye alt 1441.09 mi



© 2006 Europa Technologies

Image © 2006 TerraMetrics

© 2005 Google

Pointer 47°27'29.75" N 91°49'35.92" W elev 1700 ft

Streaming ||||| 100%

Eye alt 130.03 mi

Outer Island
Apostle Islands
Madeline Island



Starting your search

- Before deploying any search equipment you need good information.
- Conduct interviews to determine the point last seen.
- If you don't have a good point last seen you may need to use canines or Side Scan sonar to determine your search area.



Canine Otter





28.5 Lake Assault

Having the right work platform is also very important



VideoRay Pro 4

Burntside Lake

Ely, MN

Snowmobiler Through the ice



Alwood Ave



Burntside Lake

Thunder Bay

Edward Island

Pie Island

Isle Royale

Duluth



Outer Island

Apostle Islands

Madeline Island

Minnesota

Image NOAA
Image USDA Farm Service Agency
© 2011 Google
© 2011 Europa Technologies

© 2010 Google

Imagery Date: 6/2/2009

47°32'05.76" N 91°40'07.03" W elev 1754 ft

Eye alt 264.41 mi

Burntside Lake



DISCLAIMER:
St. Louis County makes no representation or warranties, express or implied, with respect to the use or reuse of data provided herewith, regardless of its format or the means of its transmission. THE DATA ARE PROVIDED "AS IS" WITH NO GUARANTEE OR REPRESENTATION ABOUT THE ACCURACY, CURRENCY, SUITABILITY, PERFORMANCE, MERCHANTABILITY, RELIABILITY OR FITNESS OF THIS DATA FOR ANY PARTICULAR PURPOSE. St. Louis County shall not be liable for any direct, indirect, special, incidental, compensatory or consequential damages or third party claims resulting from the use of these data, even if St. Louis County has been advised of the possibility of such potential loss or damage. These data may not be used in states that do not allow the exclusion or limitation of incidental or consequential damages.

© 2012 Google

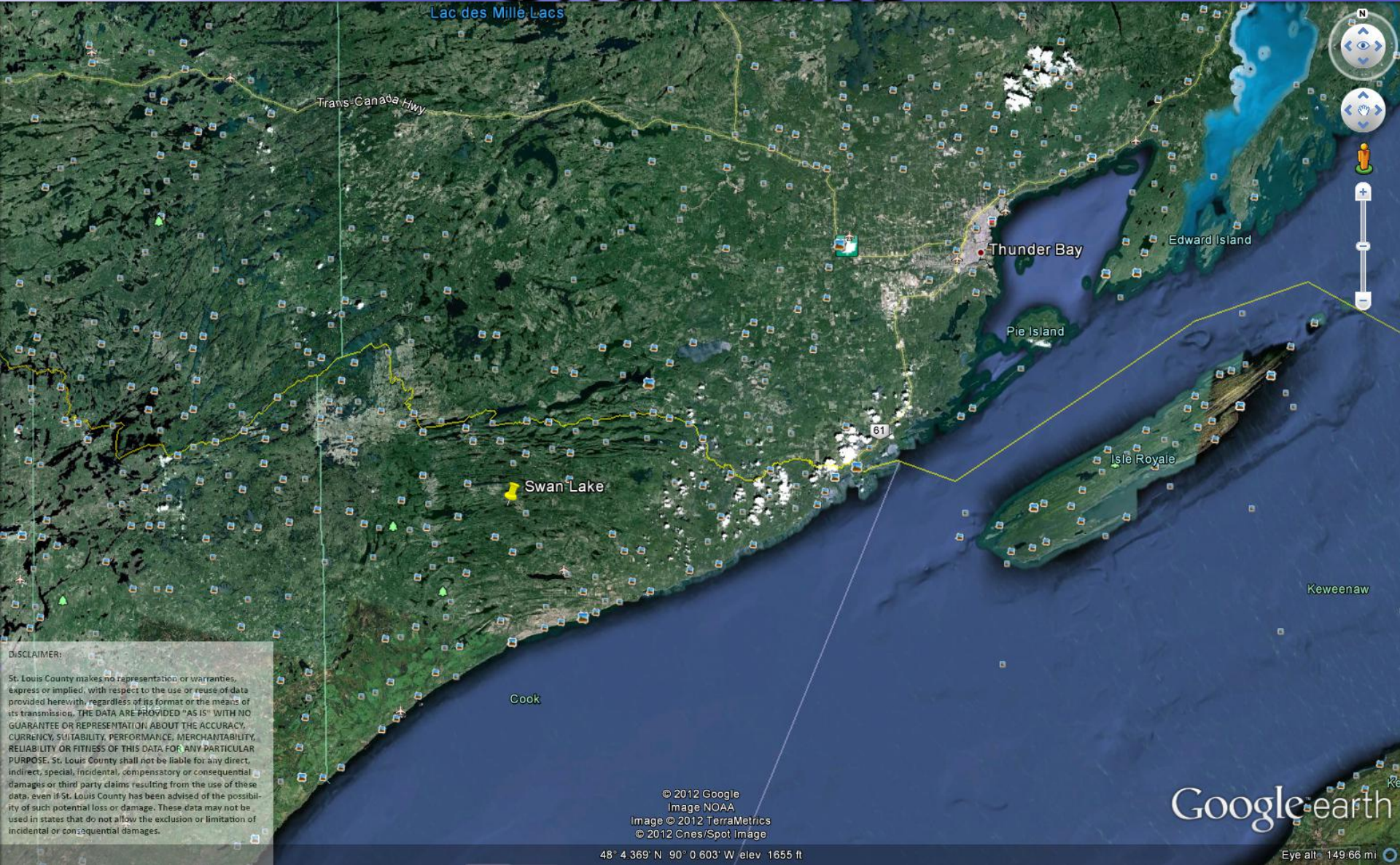
Image © 2012 GeoEye
Image USDA Farm Service Agency

Google earth



Swan Lake, MN
Boundary Waters Canoe Area

Swan Lake



Lac des Mille Lacs

Trans-Canada Hwy

Thunder Bay

Edward Island

Pie Island

Swan Lake

61

Isle Royale

Keweenaw

Cook

DISCLAIMER:

St. Louis County makes no representation, or warranties, express or implied, with respect to the use or reuse of data provided herewith, regardless of its format or the means of its transmission. THE DATA ARE PROVIDED "AS IS" WITH NO GUARANTEE OR REPRESENTATION ABOUT THE ACCURACY, CURRENCY, SUITABILITY, PERFORMANCE, MERCHANTABILITY, RELIABILITY OR FITNESS OF THIS DATA FOR ANY PARTICULAR PURPOSE. St. Louis County shall not be liable for any direct, indirect, special, incidental, compensatory or consequential damages or third party claims resulting from the use of these data, even if St. Louis County has been advised of the possibility of such potential loss or damage. These data may not be used in states that do not allow the exclusion or limitation of incidental or consequential damages.

© 2012 Google
Image NOAA
Image © 2012 TerraMetrics
© 2012 Cnes/Spot Image

Google earth

48° 4.369' N 90° 0.603' W elev 1655 ft

Eye alt: 149.66 mi



DISCLAIMER:

St. Louis County makes no representation or warranties, express or implied, with respect to the use or reuse of data provided herewith, regardless of its format or the means of its transmission. THE DATA ARE PROVIDED "AS IS" WITH NO GUARANTEE OR REPRESENTATION ABOUT THE ACCURACY, CURRENTCY, SUITABILITY, PERFORMANCE, MERCHANTABILITY, RELIABILITY OR FITNESS OF THIS DATA FOR ANY PARTICULAR PURPOSE. St. Louis County shall not be liable for any direct, indirect, special, incidental, compensatory or consequential damages or third party claims resulting from the use of these data, even if St. Louis County has been advised of the possibility of such potential loss or damage. These data may not be used in states that do not allow the exclusion or limitation of incidental or consequential damages.

© 2012 Google
Image USDA Farm Service Agency

Google earth

Imagery Date: 6/23/2010 1991

47° 57.209' N 90° 31.600' W elev 1691 ft

Eye alt 7767 ft

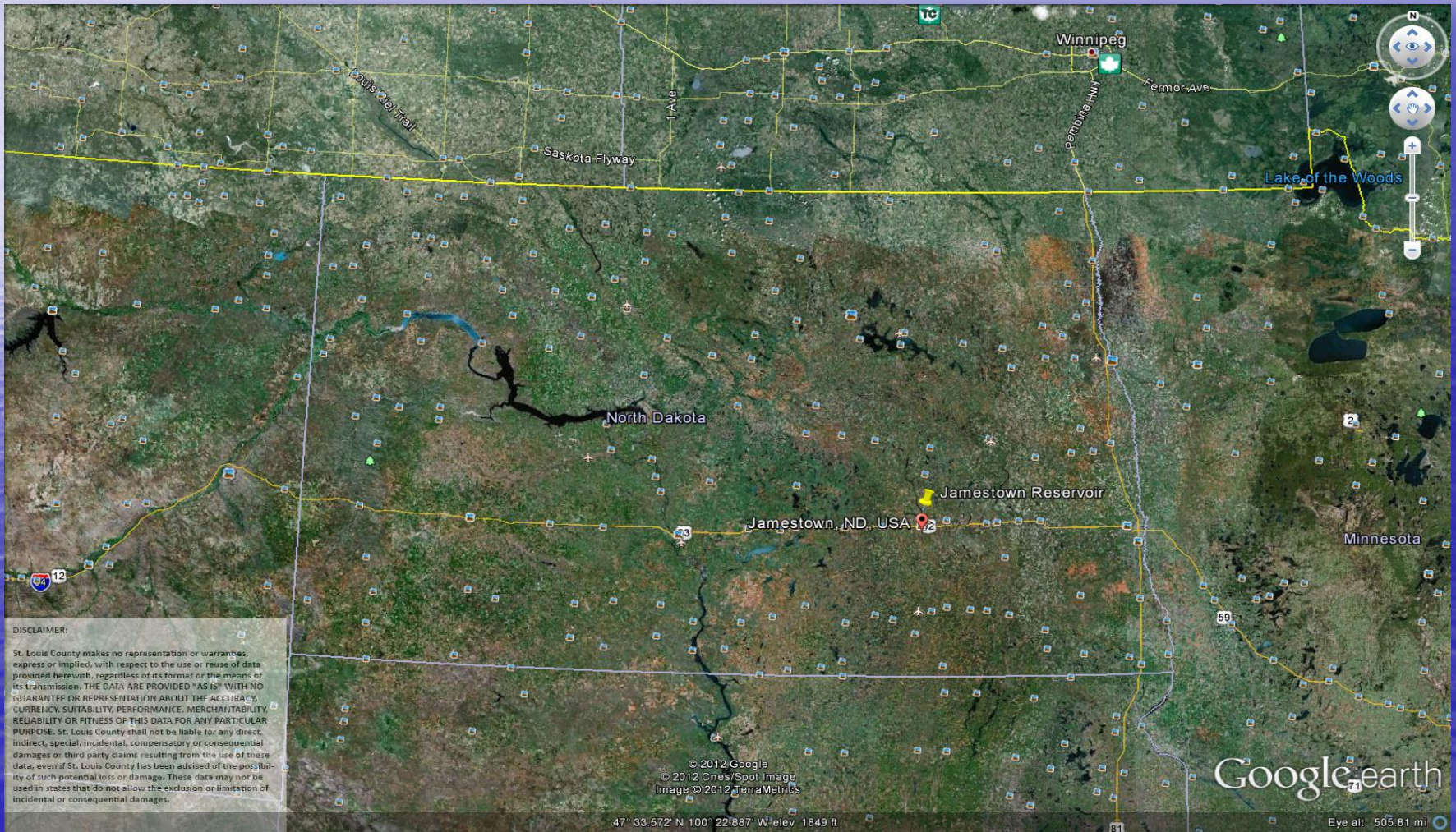




Jamestown, ND

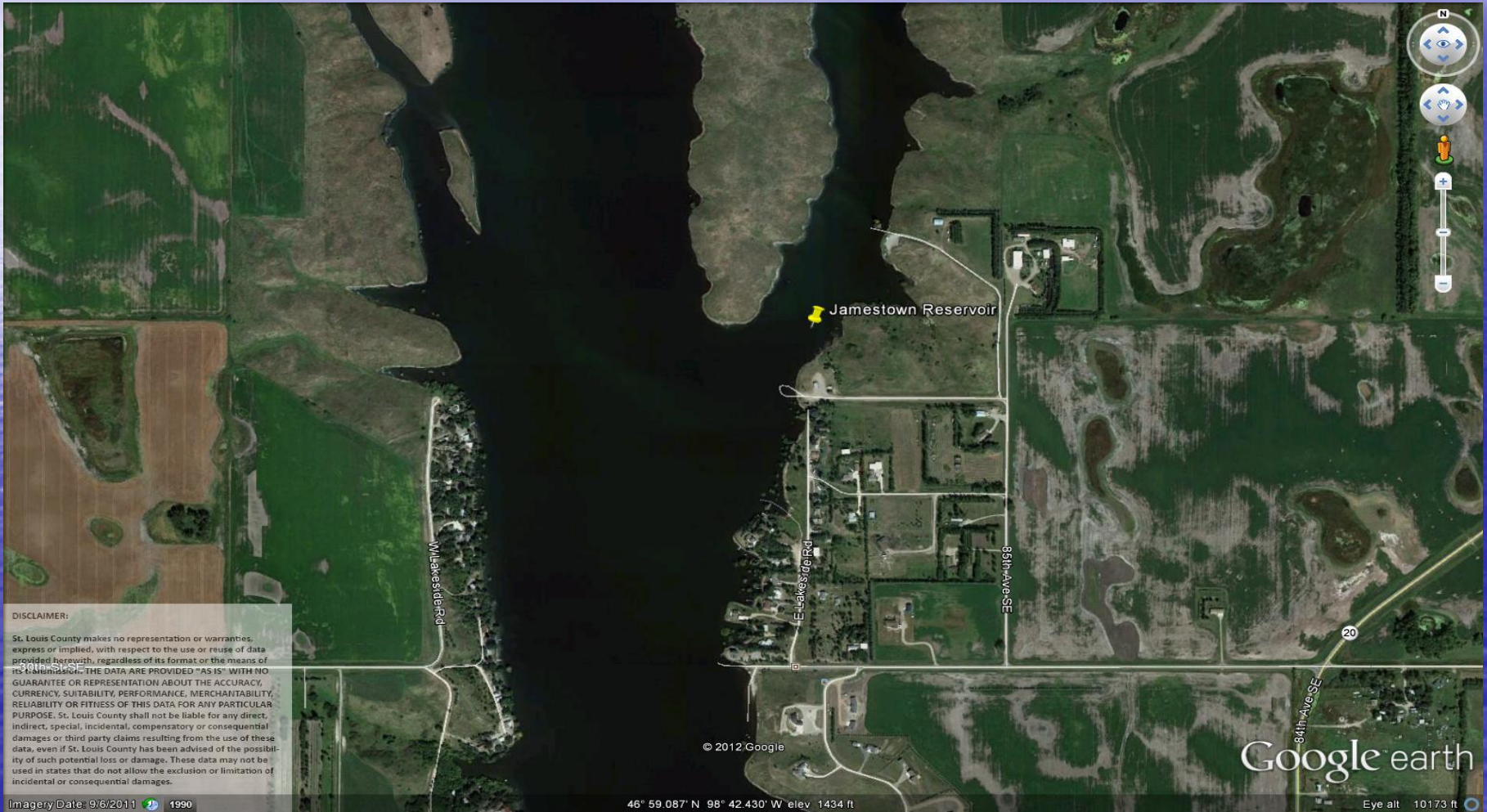
Missing Ice Fisherman

Jamestown, ND



DISCLAIMER:
St. Louis County makes no representation or warranties, express or implied, with respect to the use or reuse of data provided hereon, regardless of its format or the means of its transmission. THE DATA ARE PROVIDED "AS IS" WITH NO GUARANTEE OR REPRESENTATION ABOUT THE ACCURACY, CURRENCY, SUITABILITY, PERFORMANCE, MERCHANTABILITY, RELIABILITY OR FITNESS OF THIS DATA FOR ANY PARTICULAR PURPOSE. St. Louis County shall not be liable for any direct, indirect, special, incidental, compensatory or consequential damages or third party claims resulting from the use of these data, even if St. Louis County has been advised of the possibility of such potential loss or damage. These data may not be used in states that do not allow the exclusion or limitation of incidental or consequential damages.

Jamestown Reservoir



DISCLAIMER:

St. Louis County makes no representation or warranties, express or implied, with respect to the use or reuse of data provided herewith, regardless of its format or the means of its transmission. THE DATA ARE PROVIDED "AS IS" WITH NO GUARANTEE OR REPRESENTATION ABOUT THE ACCURACY, CURRENCY, SUITABILITY, PERFORMANCE, MERCHANTABILITY, RELIABILITY OR FITNESS OF THIS DATA FOR ANY PARTICULAR PURPOSE. St. Louis County shall not be liable for any direct, indirect, special, incidental, compensatory or consequential damages or third party claims resulting from the use of these data, even if St. Louis County has been advised of the possibility of such potential loss or damage. These data may not be used in states that do not allow the exclusion or limitation of incidental or consequential damages.

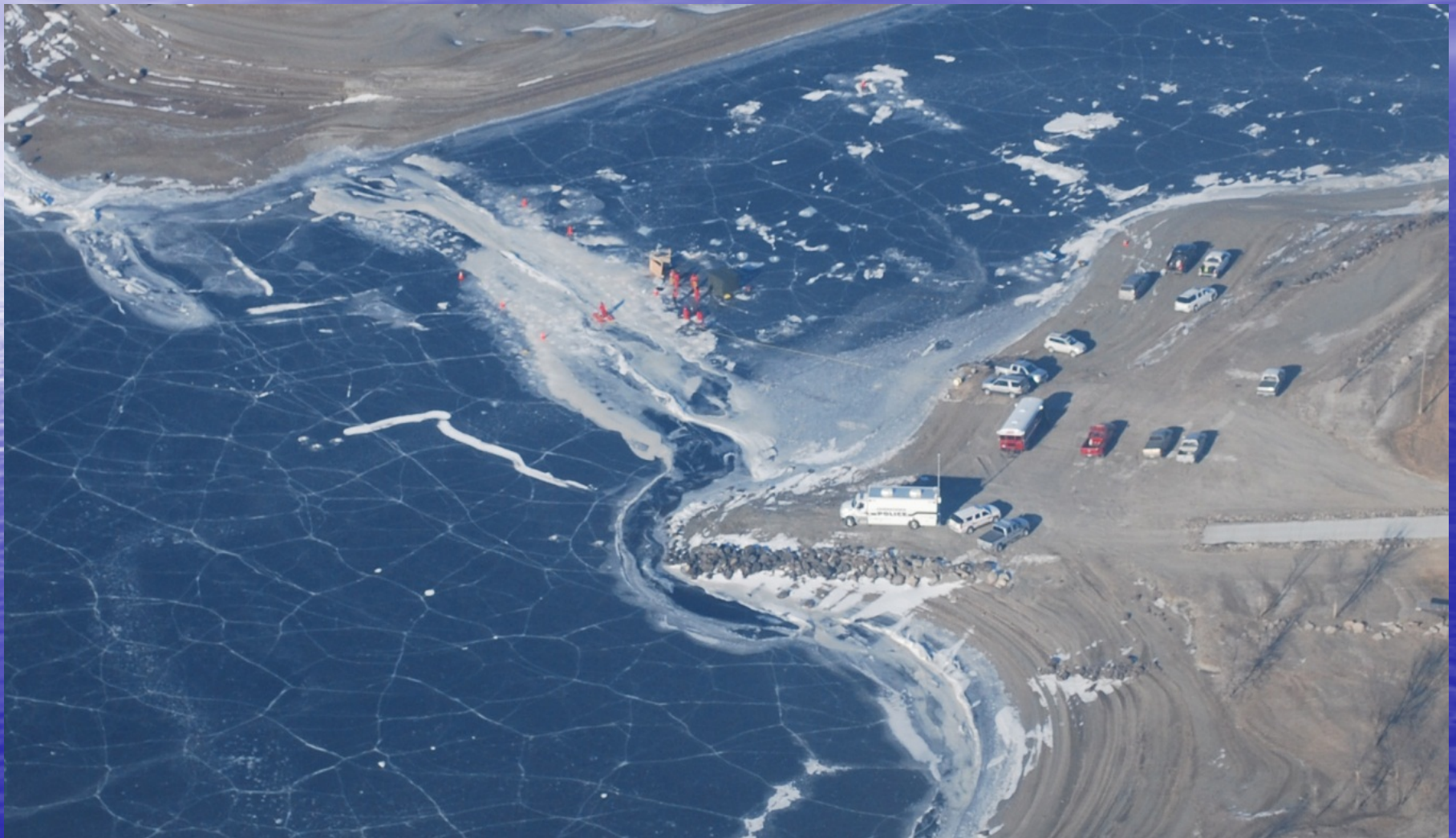
Imagery Date: 9/6/2011 1990

© 2012 Google 46° 59.087' N 98° 42.430' W elev 1434 ft

Google earth

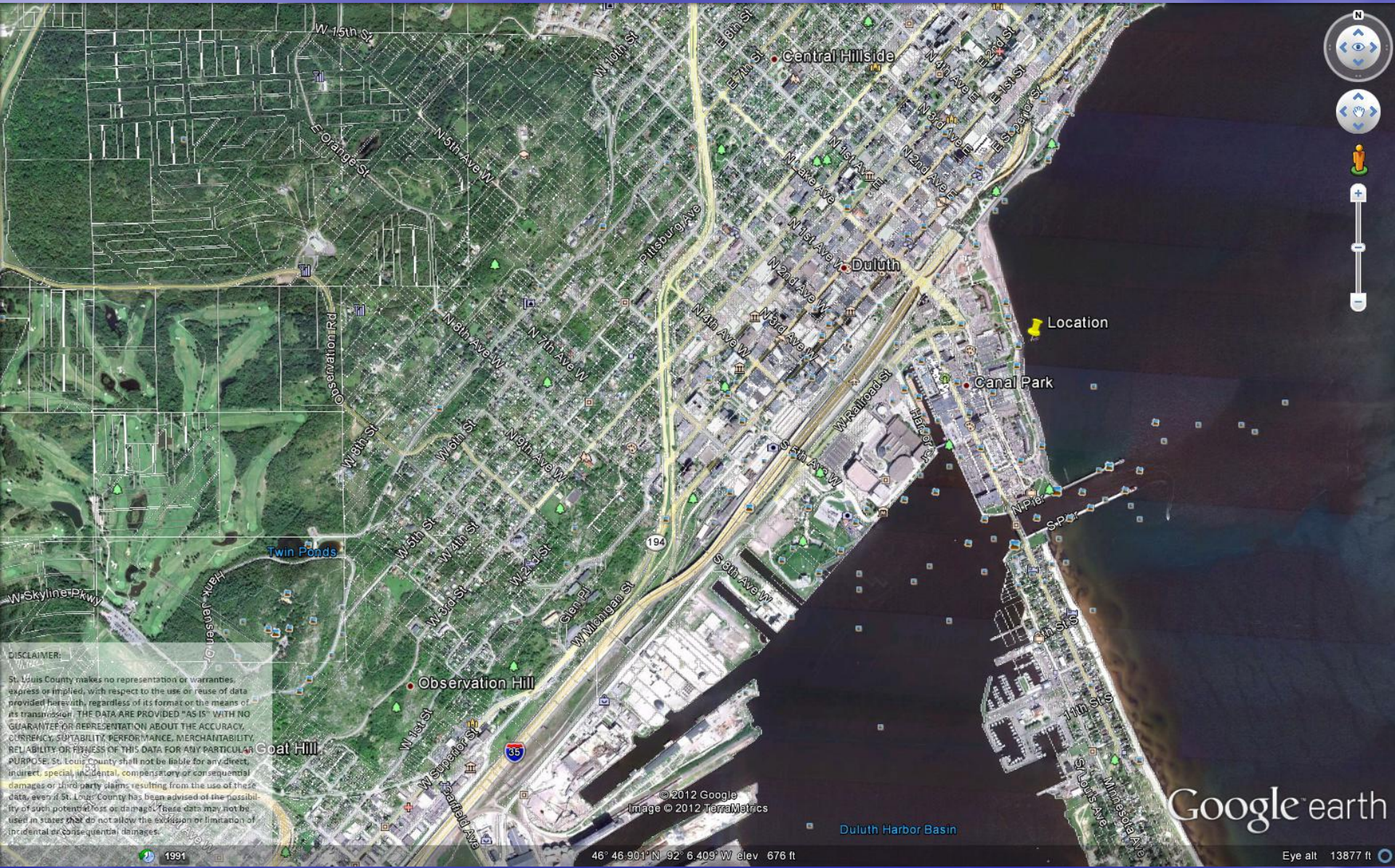
Eye alt 10173 ft

Search Area



ROV Rescue





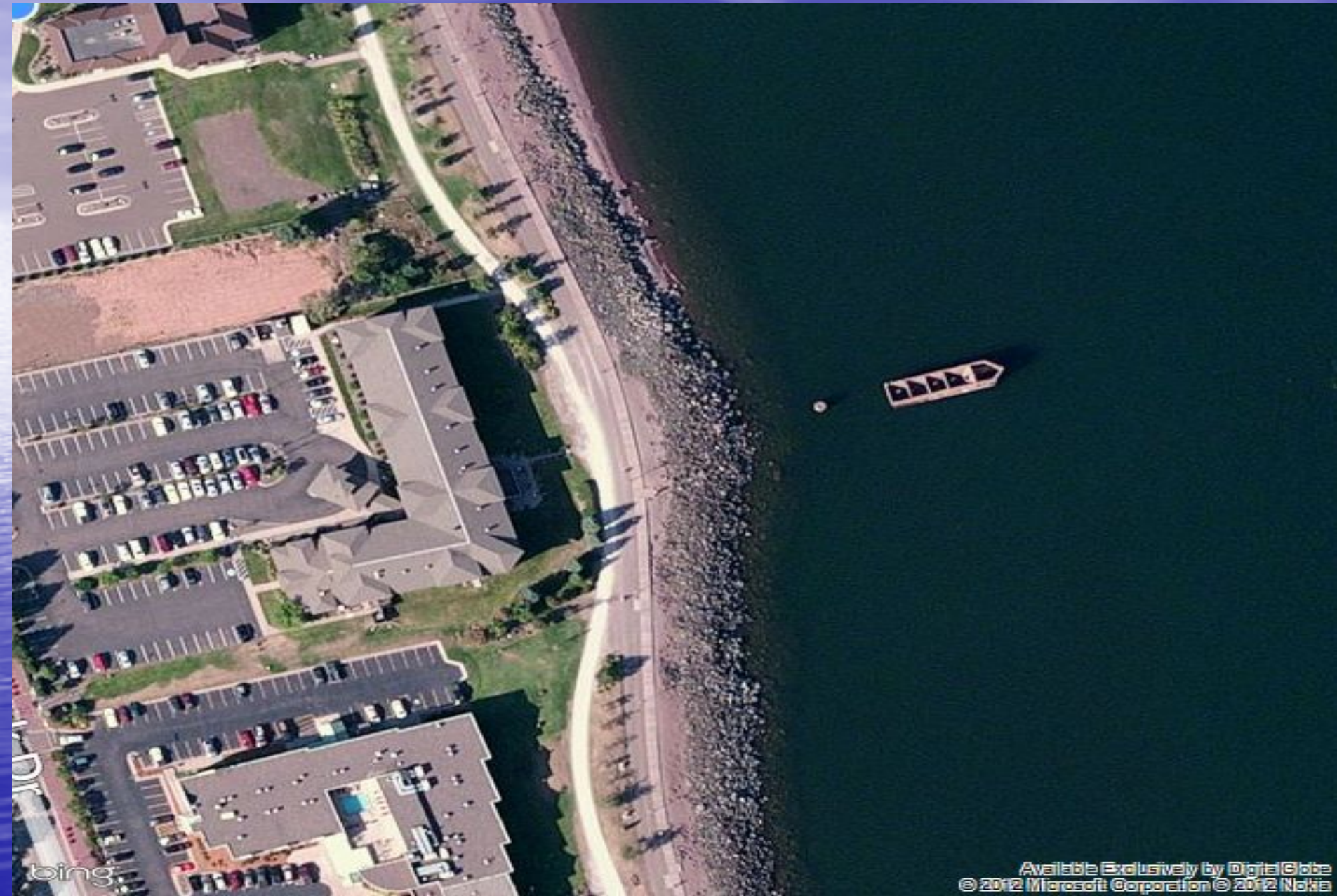
DISCLAIMER:
 St. Louis County makes no representation or warranties, express or implied, with respect to the use or reuse of data provided here-with, regardless of its format or the means of its transmission. THE DATA ARE PROVIDED "AS IS" WITH NO GUARANTEE OR REPRESENTATION ABOUT THE ACCURACY, CURRENCY, SUITABILITY, PERFORMANCE, MERCHANTABILITY, RELIABILITY OR FITNESS OF THIS DATA FOR ANY PARTICULAR PURPOSE. St. Louis County shall not be liable for any direct, indirect, special, incidental, compensatory or consequential damages or third party claims resulting from the use of these data, even if St. Louis County has been advised of the possibility of such potential loss or damage. These data may not be used in states that do not allow the expansion or limitation of incidental or consequential damages.

© 2012 Google
 Image © 2012 TerraMetrics

Google earth

46° 46.901' N 92° 6.409' W elev 676 ft

Eye alt 13877 ft



bing

Available Exclusively by DigitalGlobe
© 2012 Microsoft Corporation © 2012 Nokia

Rescue



When are ROV's most effective in public safety operations?

- Any water search, regardless of technology, requires a good point last seen.
- Training in realistic conditions produces realistic results.
- For drowning victim recovery, training must include a factual understanding of drowning physiology.
- Document Every Scene with Video or Still Photos



Tom Crossmon
(218) 349-8970

