

ACCESSORY INFORMATION

CRAWLER

The VideoRay Crawler attachment is so simple and effective it's ridiculous. It has been specifically designed for the Pro 4 Float Block and is an essential attachment for obtaining stable video on submerged surfaces in difficult, high current underwater environments (up to 6 knots).

This no-tools-required accessory easily attaches in seconds – put it on or take it off as needed in the field and start inspecting. No “mastering of roll techniques” are required to adhere to a surface – simply get under the surface and use the powerful suction of the ROVs vertical thruster to latch on and roll effortlessly upright while obtaining stable video. Imagine trying to flip a submersible over with thrusters in a 5 knot current and zero visibility. By the time another submersible “masters the roll,” the VideoRay Pro 4 would be half way done with the hull inspection. The VideoRay Crawler also does not use magnets for obvious reasons (think explosive device on a ship hull). The powerful VideoRay Pro 4 vertical thruster is ducted to move water away from the hull causing zero disturbance while latching upright and in a familiar operating position for the pilot.

Ideal applications for the VideoRay Crawler attachment include ship hull inspections, potable water tanks, and any submerged structure with a rigid surface. The hull crawler attachment will not work on VideoRay Pro 3 float blocks.

BASIC CRAWLER SPECIFICATIONS

Total Accessory Weight:	.49 kg (1.1 lb)
Depth Rating:	305 m (1,000 ft)
Dimensions:	29.8m 10.2 (16.5 with wheels), 1.9 cm (11.75, 4 [6.5 with wheels], 75 in)
Ballast:	ROV may require additional ballast
Attractive Force:	4.5 kgf (9.9 lbf)
Operating Conditions:	Up to 5 knots of current

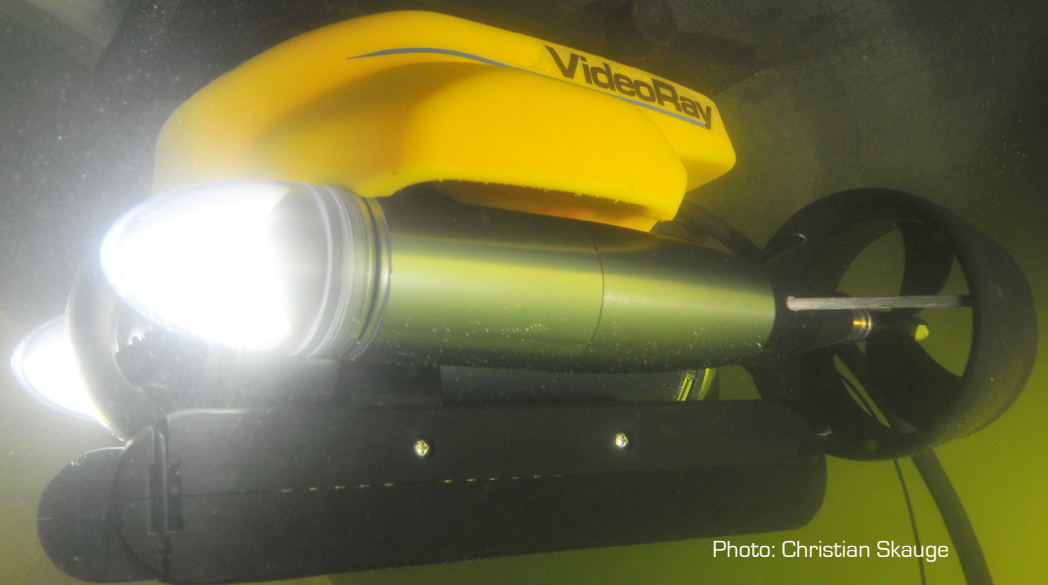


Photo: Christian Skauge