

AQUACULTURE CONFIGURATION

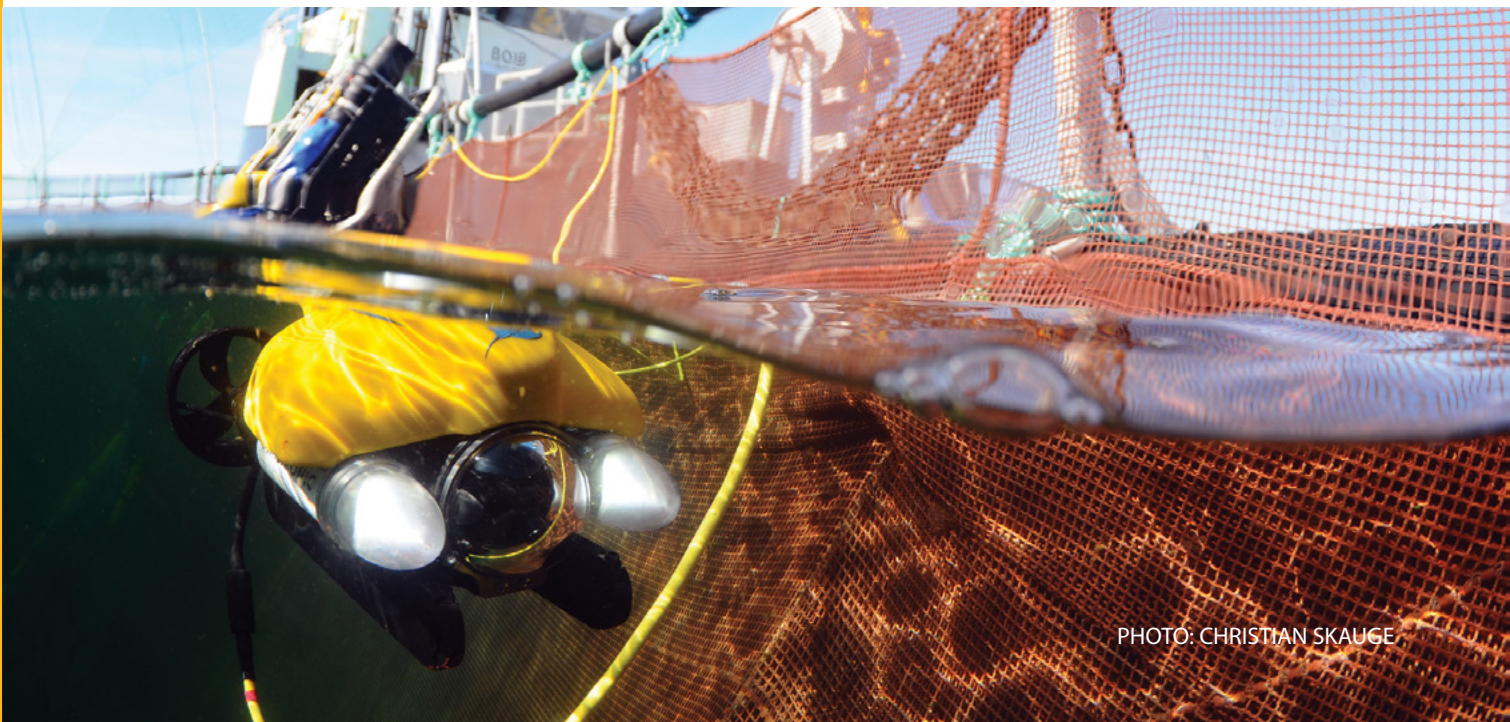
PRO 4 AQ 300MS

THE PRO 4 AQ 300MS Aquaculture ROV System has been specifically configured for fish farmers to quickly and effectively perform a variety of basic underwater inspection tasks. The easily deployable ROV can help control fishery operations by seeing what's happening beneath the surface without divers while cutting fish loss through net inspections, finding expensive lost equipment, and performing regulatory compliance work. Survey sea beds, inspect and sample polluted sites without spreading disease, recover morts, and check the condition of cages, quays, pipes, cables, and moorings.



SYSTEM COMPONENTS

- » Pro 4 ROV Submersible
- » Pro 4 Control Panel (*Monitor Not Included*)
- » Standard Computer With 15 Inch Display
VideoRay Cockpit Control Software Included
- » Wireless Programmable Hand Controller
- » Plug and Play Standard Tether
125m (410 ft) Neutrally Buoyant
- » Standard Capacity Tether Deployment System
- » Manipulator Arm with ROV Mounts
- » Pelican 1620 Hard Case with Custom Packaging
- » Basic Tool Kit With Complete Ballast Set
- » Owners Manual
- » Sunshade
- » Three (3) Days of Open Enrollment Training for One Operator





GENERAL SYSTEM

Power Requirements	100-240 VAC
Total System Weight	65 kg (144 lb)
Cases	3 Watertight Rugged Pelican Cases
Owners Manual	Hard Copy & Online Digital
System Tool Kit	Basic Tool Kit and P4 Maintenance Kit
Communications Protocol	RS-485
Warranty	2 Year Limited

SUBMERSIBLE

Depth Rating	305 m (1,000 ft)
Size	37.5, 28.9 22.3 cm (14.75, 11.4, 8.75in)
Weight	6.1 kg (13.5 lb) with Full Ballast Set
Ballast	No Tools Ballast System with Complete Stainless Ballast Set

PROPULSION (4.2 Knots Maximum Speed)

Horizontal/Vertical	2 Brushless/1 Brushless Direct Drive/Geared 100 mm Propellers/65 mm Propeller
---------------------	---

CAMERA

Main	High Resolution - NTSC or PAL Format Color and B&W Wide Dynamic Range Digital Slow Shutter White Balance 20+ Real Time Camera Settings
Sensitivity	Color Mode: .004 lux B&W Mode: .0001 lux
View Angle	90° Horizontal/140° Diagonal
Vertical Tilt	180° Control

LIGHTING

(2) LED Array with 32 Emitters 3,600 lumens	Beam Spread Covers Entire Range of Main Camera
--	--

INTEGRATED SENSORS

3D-Tilt Compensated Compass	Leak Indicator	Volt Meter
Accelerometer	Water Temperature	Depth Sensor
MEMS Gyro	Internal Temperature	

CONTROL PANEL

Size	53, 43, 22 cm (21, 17, 8.5 in)
Weight	16 kg (35 lb)
Computer	Standard Computer with 15 inch High Resolution Screen Display
Software	Programmed with complete suite of VideoRay Cockpit Control software
Main Display	Available as an Upgrade
Controller	Wireless USB Programmable Hand Controller
Recording	Integrated Recording (.WMV, .AVI formaS) One Button Hand-Controlled Video and Still Image Recording
Overlay	Date, Time, Depth, Heading, Customized Text, Logo
Video Out	Digital or Analog Composite

TETHER

Length	125 m Standard Neutral Buoyancy Tether 10 mm diameter, 454 kg (1,00 lb) breaking strength
Management	Standard Capacity Tether Deployment System enclosed in a Pelican 1620 Case with slip ring

INTEGRATED ACCESSORIES

Single axis manipulator with ROV mounts

INQUIRE WITH AN AUTHORIZED SALES REPRESENTATIVE ABOUT ADDITIONAL AVAILABLE ACCESSORIES FOR THIS ROV SYSTEM

www.videoray.com

212 East High Street, Pottstown, PA 19464

+1 610 458 3000 sales@videoray.com

© 2013 VideoRay LLC, VideoRay is a Registered Trademark of VideoRay LLC