

WWW.VIDEORAY.COM



COMMERCIAL DIVING CONFIGURATION

# PRO 4 CD 300R

## THE PRO 4 CD 300R Commercial Dive ROV System

has been specifically configured for dive operations to quickly and effectively perform a variety of basic underwater inspection tasks. The easily deployable ROV can efficiently perform routine pre-dive site scouting observations while adding one more element of safety and quality control on deep and dangerous dive missions. Because the VideoRay ROV is so easy to operate and deploy, it is perfect for quick and/or emergency inspections down to 1,000 feet when suiting up a team isn't possible or required.



## SYSTEM COMPONENTS

- » Pro 4 ROV Submersible
- » Pro 4 Control Panel (monitor not included)
- » Toughbook Computer -10.5-Inch Display  
VideoRay Cockpit Control Software Included
- » Rugged Programmable Hand Controller
- » Wireless Programmable Hand Controller
- » Plug and Play Modular Tether:
  - 100 m (330 ft) Neutrally Buoyant
- » Standard Capacity Tether Deployment System
- » Pelican 1620 Hard Case with Custom Packaging
- » Basic Tool Kit With Complete Ballast Set
- » Owners Manual
- » Sunshade
- » Three (3) Days of Open Enrollment Training

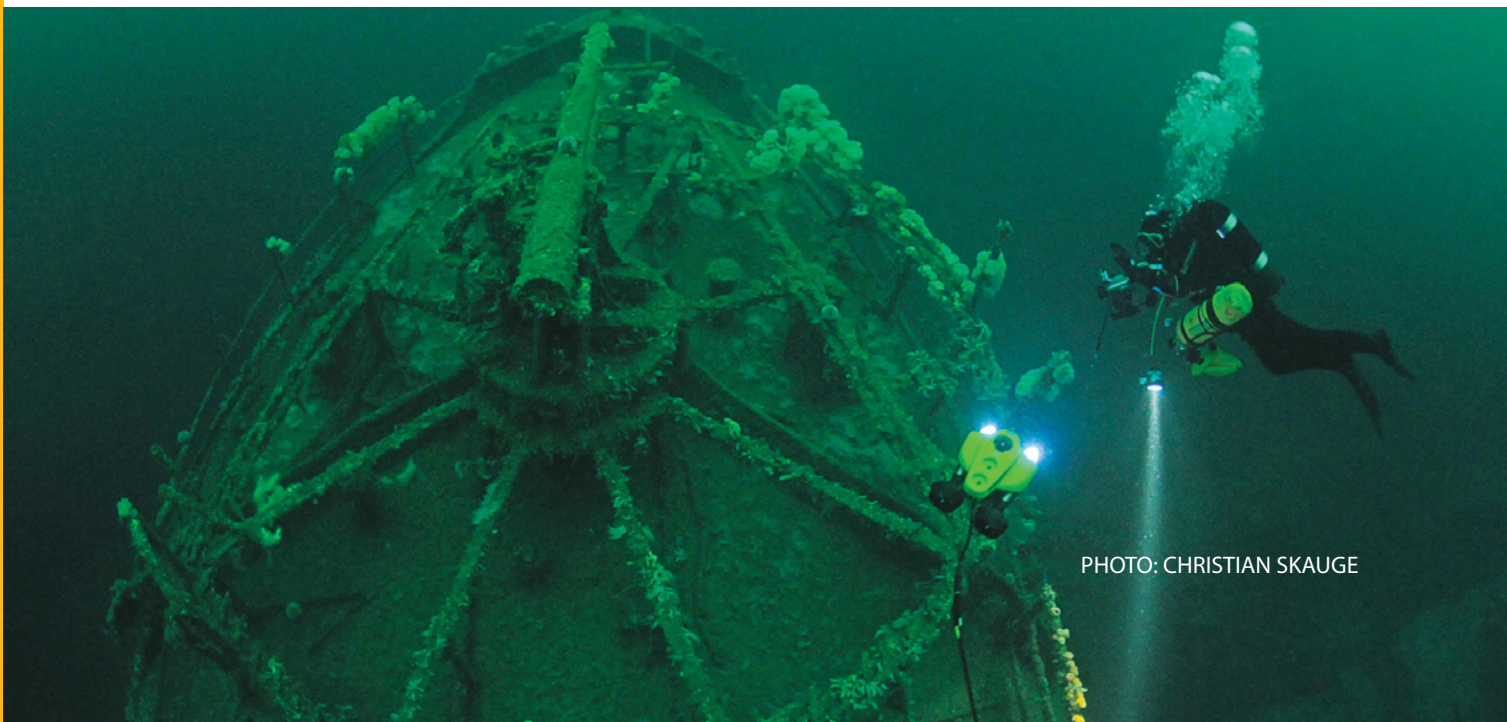


PHOTO: CHRISTIAN SKAUGE



## GENERAL SYSTEM

Power Requirements	100-240 VAC
Total System Weight	62.8 kg (138.6 lb)
Cases	3 Watertight Rugged Pelican Cases
Owners Manual	Hard Copy & Online Digital
System Tool Kit	Basic Tool Kit and P4 Maintenance Kit
Communications Protocol	RS-485
Warranty	2 Year Limited

---

## SUBMERSIBLE

Depth Rating	305m (1,000 ft)
Size	37.5, 28.9 22.3 cm (14.75, 11.4, 8.75in)
Weight	6.1 kg (13.5 lb) [with Full Ballast Set]
Ballast	(No Tools Required) Ballast System with Complete Brass Ballast Set

## PROPULSION (4.2 Knots Maximum Speed)

Horizontal/Vertical	2 Brushless/1 Brushless Direct Drive/Geared 100mm Propellers/65mm Propeller
---------------------	---

## CAMERA

Main	High Resolution - NTSC or PAL Format Color and B&W Wide Dynamic Range Digital Slow Shutter White Balance
Sensitivity	20+ Real Time Camera Settings Color Mode: .004 lux B&W Mode: .0001 lux
View Angle	90° Horizontal/140° Diagonal
Vertical Tilt	180° Control

## LIGHTING

(2) LED Array with 32 Emitters 3,600 lumens	Beam Spread covers entire range of Main Camera
--	--

## INTEGRATED SENSORS

3D-Tilt Compensated Compass	Leak Indicator	Volt Meter
Accelerometer	Water Temperature	Depth Sensor
MEMS Gyro	Internal Temperature	

---

## CONTROL PANEL

Size	53, 43, 22 cm (21, 17, 8.5 in)
Weight	16 kg (35 lb)
Computer	Toughbook Computer with swivel display - 10.5 inch
Software	Programmed with complete suite of VideoRay Cockpit Control software
Main Display	Available as an Option
Controller	Rugged USB Programmable Hand Controller and Wireless USB Programmable Hand Controller
Recording	Integrated Recording (.WMV, .AVI formats) One Button Hand-Controlled Video and Still Image Recording
Overlay	Date, Time, Depth, Heading, Customized Text, Logo
Video Out	Digital or Analog Composite

---

## TETHER

Length	100m (330 ft) total length, Plug and Play Tether 10mm diameter, 454 kg (1,00 lb) breaking strength
Management	Standard Capacity Tether Deployment System enclosed in a Pelican 1620 Case with slip ring

---

## INTEGRATED ACCESSORIES

INQUIRE WITH AN AUTHORIZED SALES REPRESENTATIVE ABOUT ADDITIONAL AVAILABLE ACCESSORIES FOR THIS ROV SYSTEM

---

**[www.videoray.com](http://www.videoray.com)**

212 East High Street, Pottstown, PA 19464

+1 610 458 3000 [sales@videoray.com](mailto:sales@videoray.com)

© 2013 VideoRay LLC, VideoRay is a Registered Trademark of VideoRay LLC