

COMMERCIAL DIVING CONFIGURATION

PRO 4 CD 300XSV

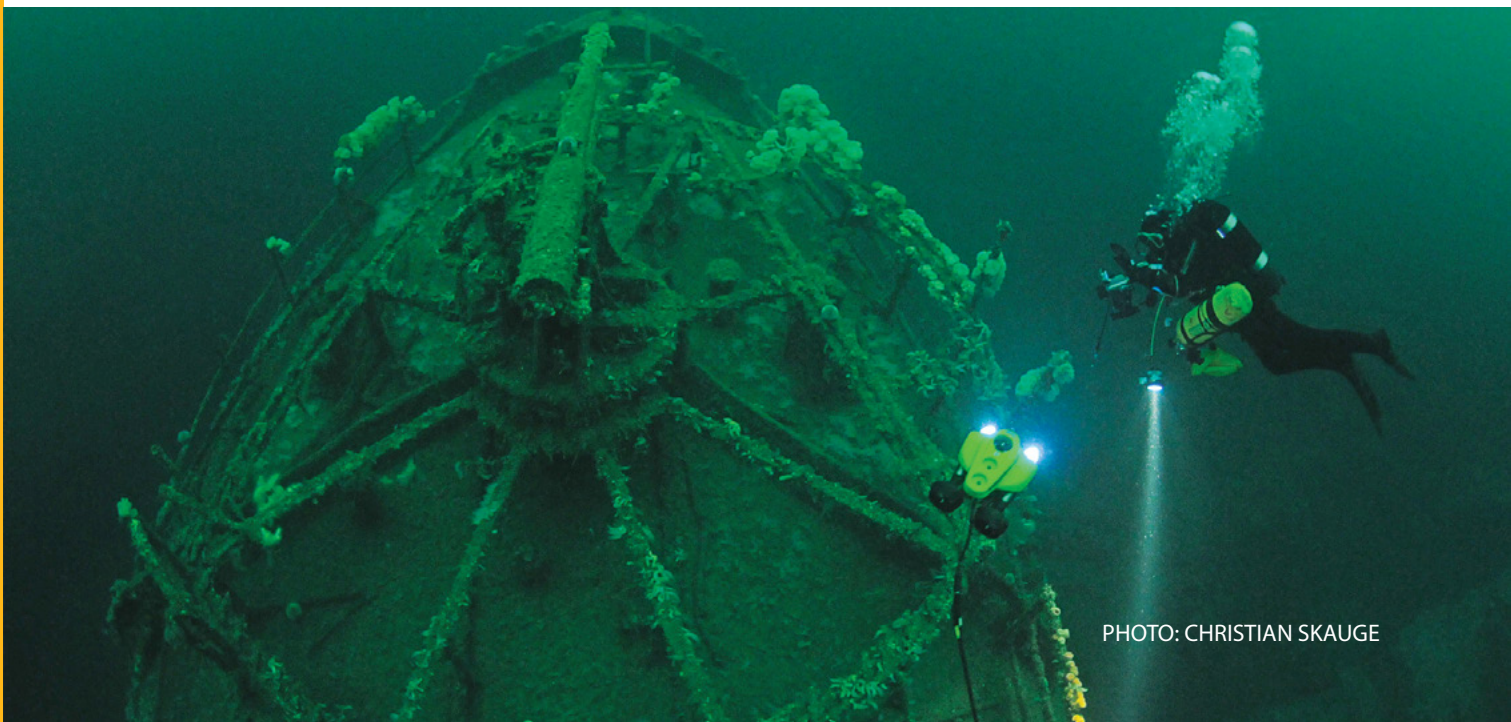
THE PRO 4 CD 300XSV Commercial Dive ROV System

has been specifically configured for advanced dive operations to quickly and effectively perform a variety of underwater target location and inspection tasks. With the addition of longer tether lengths, scanning sonar for large structure or target identification and navigation, Real Time video enhancement, a stocked P4 Maintenance Parts Kit, a daylight viewable High Bright Monitor, and a Manipulator Arm, this system is the total package and can operate in low visibility water where divers would be ineffective or in danger.



BASE SYSTEM COMPONENTS

- » Pro 4 ROV Submersible
- » Pro 4 Control Panel with 15 inch High Bright Monitor
- » Standard Computer With 15 Inch Display
VideoRay Cockpit Control Software Included
- » Wireless Programmable Hand Controller
- » Rugged Programmable Hand Controller
- » Plug and Play Modular Tether:
 - 100 m (330 ft) Neutrally Buoyant
 - 76 m (250 ft) Negatively Buoyant
- » Extended Capacity Tether Deployment System
- » Manipulator Arm with Mounts
- » LYYN Real Time Video Enhancement
- » Micron DST Scanning Sonar with P4 Integration
- » Pro 4 ROV Maintenance Kit and Basic Tool Kit
- » Pelican 1620 Hard Case with Custom Packaging
- » Four (4) Days of Open Enrollment Training





GENERAL SYSTEM

Power Requirements	100-240 VAC
Total System Weight	76.7 kg (169.2 lb)
Cases	3 Watertight Rugged Pelican Cases
Owners Manual	Hard Copy & Online Digital
System Tool Kit	Basic Tool Kit and P4 Maintenance Kit
Communications Protocol	RS-485
Warranty	2 Year Limited

SUBMERSIBLE

Depth Rating	305 m (1,000 ft)
Size	37.5, 28.9 22.3 cm (14.75, 11.4, 8.75in)
Weight	6.1 kg (13.5 lb) [with Full Ballast Set]
Ballast	(No Tools Required) Ballast System with Complete Stainless Ballast Set

PROPULSION (4.2 Knots Maximum Speed)

Horizontal/Vertical	2 Brushless/1 Brushless Direct Drive/Geared 100 mm Propellers/65 mm Propeller
---------------------	---

CAMERA

Main	High Resolution - NTSC or PAL Format Color and B&W Wide Dynamic Range Digital Slow Shutter White Balance
Sensitivity	20+ Real Time Camera Settings Color Mode: .004 lux B&W Mode: .0001 lux
View Angle	90° Horizontal/140° Diagonal
Vertical Tilt	180° Control

LIGHTING

(2) LED Array with 32 Emitters 3,600 lumens	Beam Spread covers entire range of Main Camera
--	--

INTEGRATED SENSORS

3D-Tilt Compensated Compass	Leak Indicator	Volt Meter
Accelerometer	Water Temperature	Depth Sensor
MEMS Gyro	Internal Temperature	

CONTROL PANEL

Size	53, 43, 22 cm (21, 17, 8.5 in)
Weight	16 kg (35 lb)
Computer	Standard Computer with 15-inch High Resolution screen display
Software	Programmed with complete suite of VideoRay Cockpit Control software
Main Display	15-Inch Control Panel Integrated Daylight Viewable High Bright Monitor
Controller	Rugged USB Programmable Hand Controller and Wireless USB Programmable Hand Controller
Recording	Integrated Recording (.WMV,.AVI formats) One Button Hand-Controlled Video and Still Image Recording
Overlay	Date, Time, Depth, Heading, Customized Text, Logo
Video Out	Digital or Analog Composite

TETHER

Length	176 m (580 ft) total length, Modular Plug and Play Tether segments including: -100 m (330 ft) Standard Neutral Buoyancy Tether 10 mm diameter, 454 kg (1,000 lbs) breaking strength -76 m (250 ft) Extension Negative Buoyancy Tether 8 mm diameter, 454 kg (1,000 lbs) breaking strength
Management	Extended Capacity Tether Deployment System enclosed in a Pelican 1620 Case with slip ring

INTEGRATED ACCESSORIES

Micron DST Scanning Sonar with Integration and Software
LYYN Real Time Video Enhancement Feature
Single Axis Manipulator Arm

www.videoray.com

212 East High Street, Pottstown, PA 19464

+1 610 458 3000 sales@videoray.com

© 2013 VideoRay LLC, VideoRay is a Registered Trademark of VideoRay LLC