



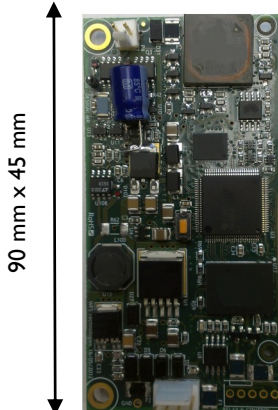
Product Specification:

Function	Wireless Modem, Wireless Datalogger, Wireless Controller
Operating Range/Environment:	
Range/Antenna	Standard: Internal, 2.5m Optional: External stub: 3m—5m External Loop: 5m—10m
Depth Rating	Standard: 350m Optional: 4000m
Operating Temperature	-10 to + 60°C
Storage Temperature	-20 to + 60°C
Interfaces:	
Storage	8MB of non-volatile memory
I/Os	2 x 4-20mA inputs / 2 x Digital outputs / 2 x Digital inputs / 2 x Relay Syncs
Data Interfaces	Standard: 4-20mA, Digital, RS232, RS485 Optional: Ethernet Adaptor, WiFi, RS422
Data Rate	Standard: 2.4 kbps Optional: 4.8 kbps
Power Supply	Standard: 18-30V Optional: 6-30V
Power Consumption	Transmit: 7W Receive: 0.6W Sleep: 0.05W
Physical Characteristics:	
Dimensions	PCB Board size: 90mm x 45mm 350m enclosure: 192mm x 85mm 4000m enclosure: 180mm x 94mm
Additional features:	On board 3-axis accelerometer Addressable 99 unique IDs

100m—350m enclosure



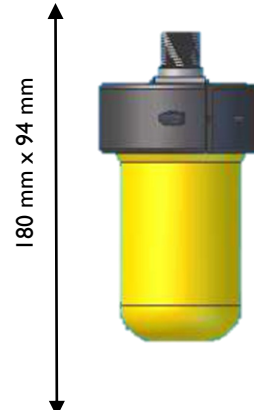
OEM version of S100



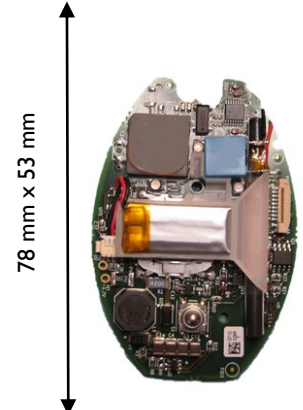
External stub antenna



4000m version of S100



OEM version of S100

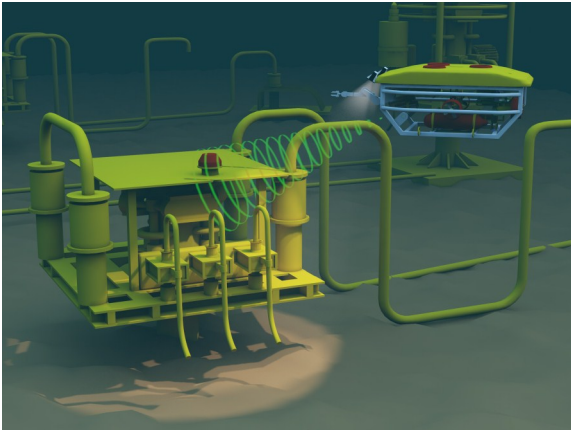


seatooth[®] S100

wireless datalogger

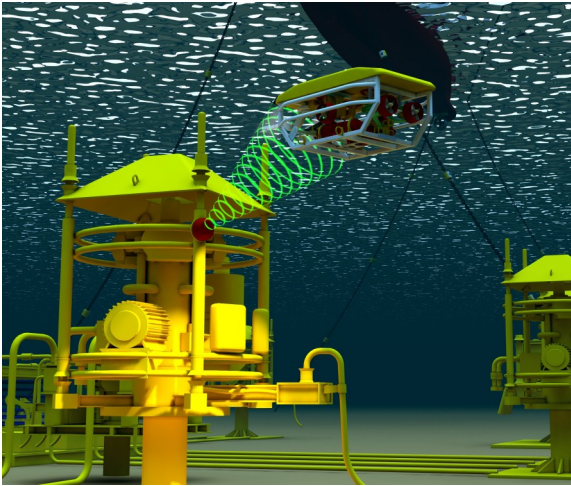


WFS
TECHNOLOGIES



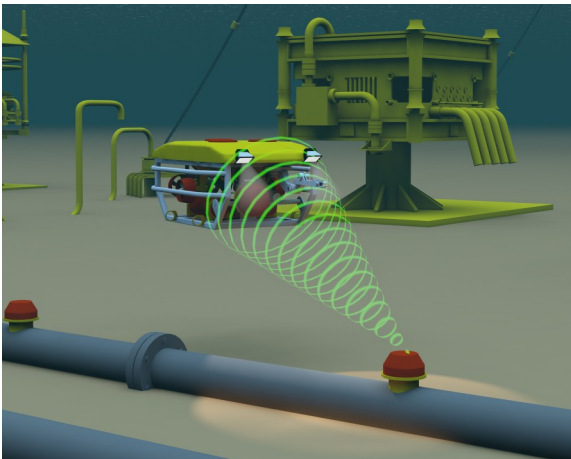
Safety: Subsea Black Box

- Black box functionality for offshore operations
- Logs up to 8MB of operational data
- Can integrate wirelessly with Subsea Control Modules
- Independent storage and data recovery
- Wireless data retrieval above the wellhead
- Allows data retrieval at safe distance



Improved efficiency: Subsea data logging

- Logging of multiple parameters such as pressure, flow, temperature etc.
- Ad-hoc data retrieval by ROV, no hardwire to surface, no physical retrieval of datalogger
- Cost effective compared to dedicated data retrieval mission



Integrity Management: Wireless Sensors

- Standard interfaces for wireless data communication with underwater vehicles
- Wireless harvest of data from subsea sensors
- Simple/flexible deployment of wireless subsea sensors
- More frequent and easier access to data — no wet mate connectors
- Reduced cost of intervention, surface support not required

CONTACT US



WFS Head Office

7 Houstoun Interchange Business Pk, Livingston, Edinburgh, EH54 5DW, UK
Tel: +44 (0) 845 862 6600



WFS Houston

777 N. Eldridge Parkway, Suite 280, Houston, TX 77079-4497, USA
Tel: +1 (832) 460 4435