

V Series

2D Multibeam Imaging Sonar

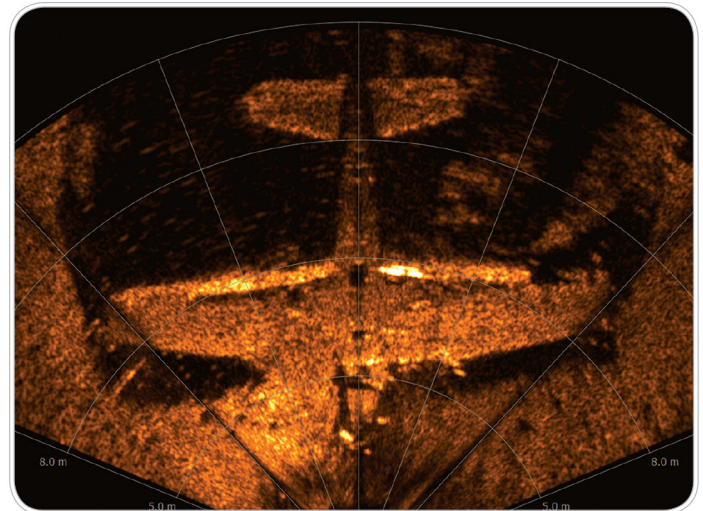
The **Teledyne BlueView V Series 2D Imaging Sonar** has been developed exclusively for VideoRay Pro 4 ROVs. Ideal for underwater detection and identification tasks in low or zero visibility conditions, the V Series sonar provides both mid-range detection and close-range identification capabilities from moving or stationary platforms.

Adapted from the high-performance P900 Series sonar, the V Series features the same power and capability of its predecessor in a **30% smaller package**. The V Series is available with either a 90° or 130° field-of-view (FOV).

The V Series sonar seamlessly integrates into the Pro 4 ROV platform through the custom skid mount and VideoRay Cockpit software. The Integration Skid mounts on the ROV in the field within seconds, allowing for quick addition or removal mid-operation if necessary. All V Series sonars are delivered with an Integration Package containing all necessary hardware and software for operation with the VideoRay Pro 4 ROV.



VideoRay Pro 4 ROV with V Series Imaging Sonar, Sonar Integration skid, Manipulator Arm



130° Field-Of-View (FOV) 2D Imaging Sonar still image of a sunken WWII Grumman F6F Hellcat Fighter Aircraft

PRODUCT APPLICATIONS

All V Series sonar operate while in motion or from a stationary position delivering real-time imagery and data.

- ROV navigation
- Object detection
- Target tracking
- Obstacle avoidance
- Operations monitoring
- Equipment/tool placement
- Search and recovery
- Area survey



2D Multibeam Imaging Sonar

V Series

Technical Specifications

Model	V-90	V-130
Sonar		
Operating Frequency	900 kHz	900 kHz
Update Rate	Up to 15 Hz	Up to 15 Hz
Field of View	90° x 20°	130° x 20°
Maximum Detection Range	100 m (328 ft)	100 m (328 ft)
Optimal Range	2 - 60 m (6.6 - 196.9 ft)	2 - 60 m (6.6 - 196.9 ft)
Beam Width	1° x 20°	1° x 20°
Number of Beams	512	768
Beam Spacing	0.18°	0.18°
Range / Time Resolution	25.4 mm (1.0 in)	25.4 mm (1.0 in)
Interface		
Supply Voltage	12 - 48 VDC	12 - 48 VDC
Power Consumption	17 W max	17 W max
Connectivity	Ethernet	Ethernet
Mechanical		
Depth Rating	300 m (984 ft)	300 m (984 ft)
Weight in Air	1.5 kg (3.4 lbs)	1.5 kg (3.4 lbs)
Weight in Water	.20 kg (.44 lbs) (Negative in freshwater)	.20 kg (.44 lbs) (Negative in freshwater)
Size (Diameter x Length)	102 mm x 206 mm (4 in x 8.1 in)	102 mm x 206 mm (4 in x 8.1 in)
Environment		
Operating Temperature	0 - 40 °C (32 - 104 °F)	0 - 40 °C (32 - 104 °F)
Storage Temperature	-10 - 60 °C (14 - 140 °F)	-10 - 60 °C (14 - 140 °F)

www.videoray.com

212 East High Street, Pottstown, PA 19464
+1 610 458 3000 sales@videoray.com