

ULTRA PORTABLE ROV CONFIGURATION

PRO 4 ULTRA BASE

THE PRO 4 ^{Ultra BASE Remotely Operated Vehicle (ROV)}

System has been specifically configured for operations requiring Pro 4 performance in an ultra portable package. The Ultra BASE features a drastic reduction in control panel weight - about 40% lighter than the standard Pro 4 Control Panel.

The Pro 4 Ultra BASE system includes a standard Pro 4 submersible, an ultra thin, sleek convertible touchscreen tablet / keyboard PC loaded with VideoRay Cockpit control software, and a wired USB Logitech hand controller.

The Ultra BASE configuration is limited to small VideoRay accessories such as the manipulator (not included). It will not run sonar or any complex accessory components. The user must also select a tether configuration for this system.



ULTRA BASE SYSTEM COMPONENTS

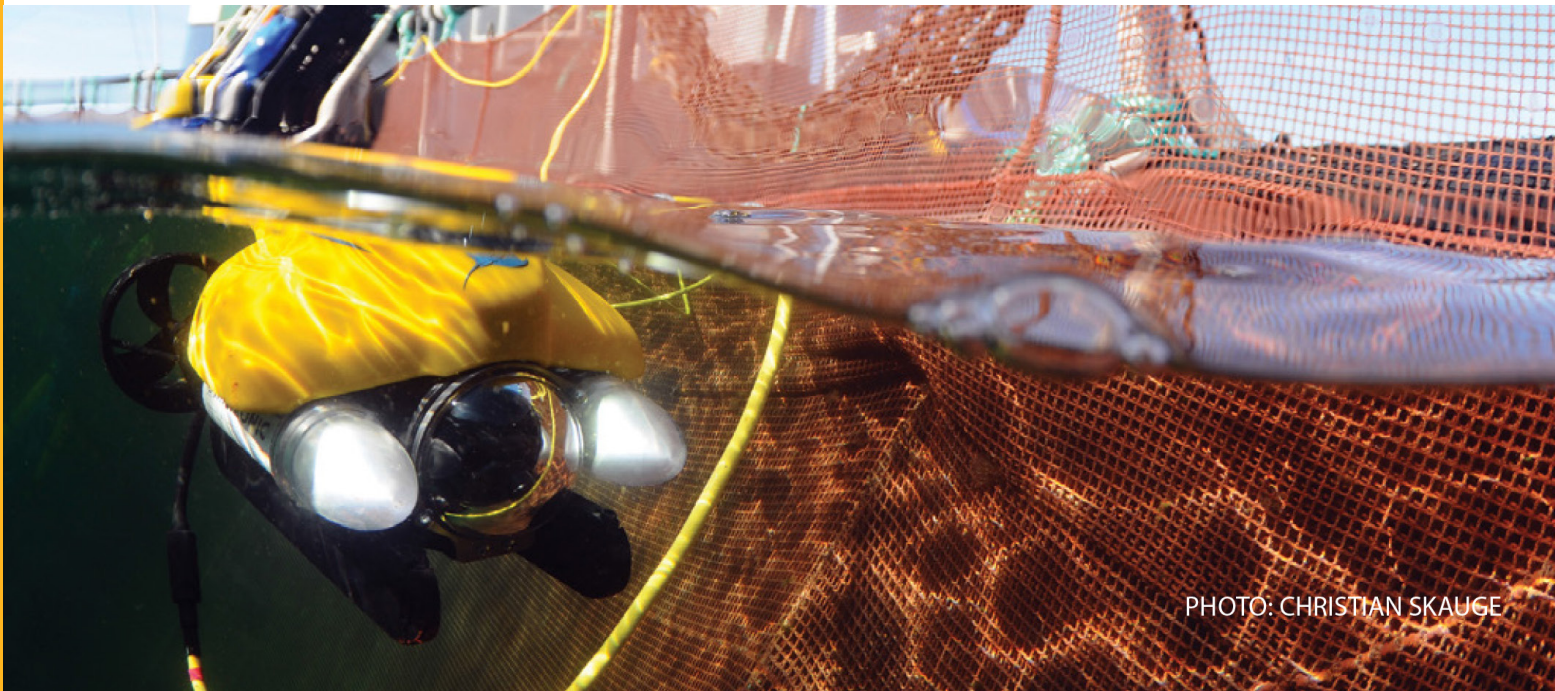
- » Pro 4 ROV Submersible (standard finish)
- » Pro 4 Ultra Control Panel with Convertible Tablet PC
- » Wired USB Logitech Hand Controller
- » Pelican 1620 Hard ROV Case with Custom Packaging
- » Basic Tool Kit and spares with Complete Ballast Set
- » Owners Manual and Documentation
- » Sunshade
- » Training Documentation and Video Deliverable



Ultra Panel PC in keyboard mode



Ultra Panel PC in touch screen tablet mode



GENERAL SYSTEM

Power Requirements
Total System Weight
Cases
Owners Manual
System Tool Kit
Communications Protocol
Warranty

100-240 VAC, 50/60 Hz, 800 Watts Max
38.5 kg (85 lb)
2 Watertight Rugged Hard Cases
Hard Copy & Online Digital
Basic Tool Kit
RS-485
2 Year Limited



SUBMERSIBLE

Depth Rating 305 m (1,000 ft)
Size (LxWxH) 37.5, 28.9, 22.3 cm (14.75, 11.4, 8.75 in)
Weight 6.1 kg (13.5 lb) [with Maximum Ballast Weight]
Ballast (No Tools Required) Ballast System with Complete Stainless Ballast Set

PROPULSION (4.2 Knots Maximum Speed)

Horizontal/Vertical 2 Brushless/1 Brushless
Direct Drive/Geared
100 mm Propellers/65 mm Propeller

CAMERA

Main High Resolution - NTSC Format
Color and B&W
Wide Dynamic Range
Digital Slow Shutter
White Balance
20+ Real Time Camera Settings
Sensitivity Color Mode: .4 Lux / 30 IRE @ F1.2 / AGC max
B&W Mode: .001 Lux DSS
View Angle 90° Horizontal/140° Diagonal - Wide Angle
Vertical Tilt 180° Control

LIGHTING

(2) Optimized LED Arrays Forward looking Beam Spread covers entire range of Main Camera
3,600 lumens per light (7,200 lumens total)

INTEGRATED SENSORS

3D-Tilt Compensated Compass Leak Indicator System Voltage
Accelerometer Water Temperature Depth Sensor
MEMS Gyro Internal Temperature

CONTROL PANEL

Size 50.8, 37.3, 14.7 cm (20, 14.7, 5.8 in)
Weight 9.1 kg (20 lbs)
Computer Convertible tablet / keyboard PC with integration mount
Software PC Programmed with complete suite of VideoRay Cockpit control software
Main Display 13" PC screen - no monitor upgrades available on Ultra BASE
Controller Wired USB Logitech Hand Controller
Recording Integrated Recording (.WMV, .AVI formats)
One Button Hand-Controlled Video and Still Image Recording
Overlay Date, Time, Depth, Heading, Customized Text, Logo
Video Out Digital or Analog Composite

TETHER

Tether is not included with the Ultra BASE configuration. Any existing or new VideoRay tether is compatible with this ROV system.

INTEGRATED ACCESSORIES

*** Accessories are limited to basic add-ons such as the manipulator arm (not included) on the Ultra BASE System. Cannot run complex accessories such as sonar or positioning systems on the Ultra BASE. Consult your representative for options.

INQUIRE WITH AN AUTHORIZED SALES REPRESENTATIVE ABOUT ADDITIONAL AVAILABLE ACCESSORIES FOR THIS ROV SYSTEM

www.videoray.com

212 East High Street, Pottstown, PA 19464

+1 610 458 3000 sales@videoray.com

© 2014 VideoRay LLC, VideoRay is a Registered Trademark of VideoRay LLC