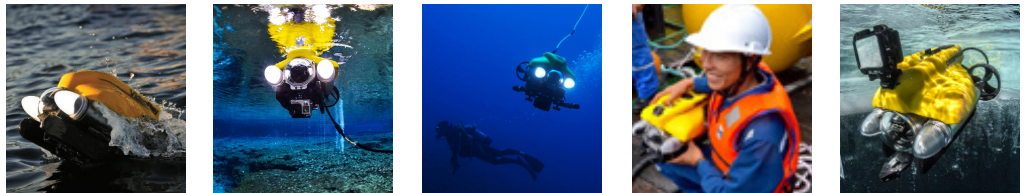


Product Data Sheet

Pro 4 Ultra BASE



Keyboard Mode



Tablet Mode



The Pro 4 **Ultra BASE** Remotely Operated Vehicle (ROV) System has been specifically configured for operations requiring Pro 4 performance in an ultra portable package. The Ultra BASE features a drastic reduction in control panel weight - about 40% lighter than the standard Pro 4 Control Panel.

The Pro 4 Ultra BASE system includes a standard Pro 4 submersible, an ultra thin, sleek convertible touchscreen tablet / keyboard PC loaded with VideoRay Cockpit control software, and a wired USB Logitech hand controller.

The Ultra BASE configuration is limited to small VideoRay accessories such as the manipulator (not included). It will not run sonar or any complex accessory components. The user must also select a tether configuration for this system.

SYSTEM INFORMATION

Depth Rating	305m (1,000 ft)
System Weight	38.5 kg (85lbs)
Communications Protocol	RS-485
Cases	2 Watertight Rugged Hard Cases
Owners Manual	Hard Copy and Online Digital
Tool Kit	Basic Tool Kit
Warranty	2 Year Limited
Additional	Sunshade

SUBMERSIBLE

Length	37.5cm (14.75in)
Width	28.9cm (11.4in)
Height	22.3cm (8.75in)
Weight	6.1kg (13.5lb) [with Full Ballast Set]
Ballast	Ballast System with Complete Stainless Ballast Set

Propulsion

Configuration	3 thrusters (2 horizontal/1 vertical)
Motor Type	Brushless
Thrust	21lbs
Speed	4.2 knots
Propeller	100mm Propellers/65mm Propeller

Lighting

Type	Optimized LED Arrays
Number of Sources	2
Camera Coverage	Forward-looking Beam Spread covers entire range of Main Camera
Lumens	3,600 lumens per light (7,200 total)

Integrated Sensors

Accelerometer	3D Tilt Compensated Compass
Leak Indicator	Internal Temperature
Depth Sensor	MEMS Gyro
Water Temperature	System Voltage

CAMERA

Main	High Resolution - NTSC or PAL Format Color or Black & White Wide Dynamic Range Digital Slow Shutter White Balance 20+ Real Time Camera Settings
Sensitivity	
Color Mode	0.004 Lux
B&W Mode	0.0001 Lux DSS
View Angle	90° Horizontal 140° Diagonal
Vertical Tilt	180° Control

CONTROL PANEL

Power Requirements	100-240 VAC
Length	50.8cm (20in)
Width	37.3cm (14.7in)
Height	14.7cm (5.8in)
Weight	9.1kg (20lb)
Computer	Convertible tablet / keyboard PC with integration mount
Software	Complete suite of VideoRay cockpit control software
Main Display	13" PC screen - no monitor upgrades available on Ultra BASE
Controller	Wired USB Logitech Hand Controller
Recording	Integrated Recording (.WMV, .AVI) One Button Hand-Controlled Video and Still-Image Recording Date, Time, Depth, Heading Digital or Analog Composite
Overlay	
Video Out	

TETHER

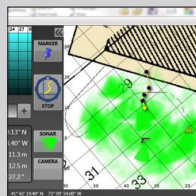
Neutral Performance	Neutral bouyancy, smaller diameter
Standard Neutral	Neutral bouyancy
Negative Extension	Negative bouyancy

VideoRay tether is plug and play; the type and length are selected based on how you plan to use the ROV system. See above options and select.

ACCESSORIES For more details, visit www.videoray.com



Sonar
Blueprint
Blueview (pictured)
Tritech



Navigation & Positioning Systems
Non-Acoustic Positioning
USBL



Manipulators
Single Axis
Rotating (pictured)



Auxillary Cameras
Second POV
GoPro



Non Destructive Testing (NDT)
Ultrasonic Thickness (pictured)
Cathodic Protection
Radiation Probe



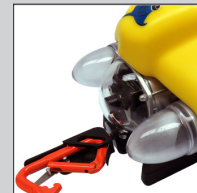
Shiphull Crawler



Video Enhancement



Automation
CoPilot RI by Seebyte



Recovery and Retrieval Tool Kit