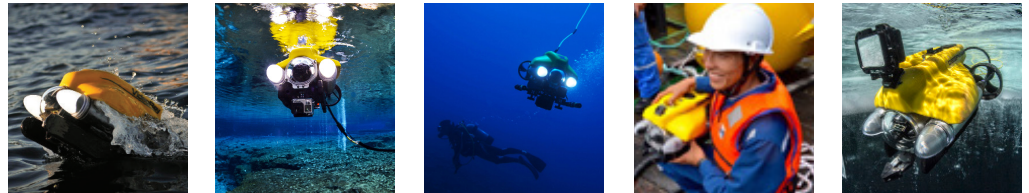


Product Data Sheet

Pro 4 Plus BASE



The Pro 4 Plus BASE Remotely Operated Vehicle (ROV) system has been specifically configured to quickly and effectively perform advanced underwater imaging tasks. The Plus BASE ROV system is a portable and cost-effective solution that can be deployed in minutes and operated by one person if necessary.

The Pro 4 Plus BASE system includes a Pro 4 submersible, Pro 4 Integrated Control Box (ICB) with a high performance Dell PC loaded with VideoRay Cockpit control software, secondary 15" Hi-Brite daylight viewable display, and an industrial hand controller.

The Plus BASE configuration is ready to accept the majority of VideoRay accessories. The user must also select a tether configuration for this system.



SYSTEM INFORMATION

Depth Rating	305m (1,000 ft)
System Weight	38.5 kg (85lbs)
Communications Protocol	RS-485
Cases	2 Watertight Rugged Hard Cases
Owners Manual	Hard Copy and Online Digital
Tool Kit	Basic Tool Kit and spares with complete Ballast Set
Warranty	2 Year Limited
Additional	BlueView Sonar-Ready Hardware Sunshade

SUBMERSIBLE

Length	37.5cm (14.75in)
Width	28.9cm (11.4in)
Height	22.3cm (8.75in)
Weight	6.1kg (13.5lb)
Ballast	Toolless Ballast System
Propulsion	
Configuration	3 thrusters (2 horizontal/1 vertical)
Motor Type	Brushless
Thrust	21 lbs
Speed	4.1 knots
Propeller	100mm Propellers/65mm Propeller
Lighting	
Type	Optimized LED Arrays
Number of Sources	2
Camera Coverage	Forward-looking Beam Spread covers entire range of Main Camera
Lumens	3,600 lumens per light (7,200 total)
Integrated Sensors	
Accelerometer	3D Tilt Compensated Compass
Leak Indicator	Internal Temperature
Depth Sensor	MEMS Gyro
Water Temperature	System Voltage

CAMERA

Main	High Resolution - NTSC Format Color and Black & White Wide Dynamic Range Digital Slow Shutter White Balance 20+ Real Time Camera Settings
Sensitivity	
Color Mode	0.4 Lux/30 IRE @ F1.2/AGC max
B&W Mode	0.001 Lux DSS
View Angle	90° Horizontal 140° Diagonal
Vertical Tilt	180° Control

CONTROL PANEL

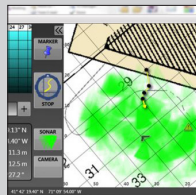
Power Requirements	100-240 VAC / 50/60 Hz 800 Watts (Max Power)
Length	53cm (21in)
Width	43cm (17in)
Height	22cm (8.5in)
Weight	16kg (35lb)
Computer	High-Performance Dell PC with panel integration and tilt mount
Software	Complete suite of VideoRay cockpit control software
Main Display	15" extended daylight viewable
Controller	Industrial Hand Controller
Recording	Integrated Recording (.WMV, .AVI) One Button Hand-Controlled TVideo and Still-Image Recording
Additional features	Auto-depth, auto-heading
Overlay	Date, Time, Depth, Heading, Customized text, Logo
Video Out	Digital or Analog Composite
TETHER	
Neutral Performance	Neutral bouyancy, smaller diameter
Standard Neutral	Neutral bouyancy
Negative Extension	Negative bouyancy

VideoRay tether is plug and play; the type and length are selected based on how you plan to use the ROV system. See above options and select.

ACCESSORIES For more details, visit www.videoray.com



Sonar
Blueprint
Blueview (pictured)
Tritech



Navigation & Positioning Systems
Non Acoustic Positioning
USBL



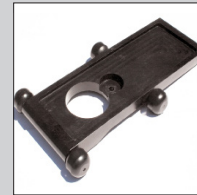
Manipulators
Single Axis
Rotating (pictured)



Auxillary Cameras
Second POV
GoPro



Non Destructive Testing (NDT)
Ultrasonic Thickness (pictured)
Cathodic Protection
Radiation Probe



Shiphull Crawler



Video Enhancement



Automation
CoPilot RI by Seebyte



Recovery and Retrieval Tool Kit