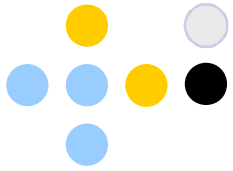


The Essential Upgrader's Guide to the VideoRay Pro 4

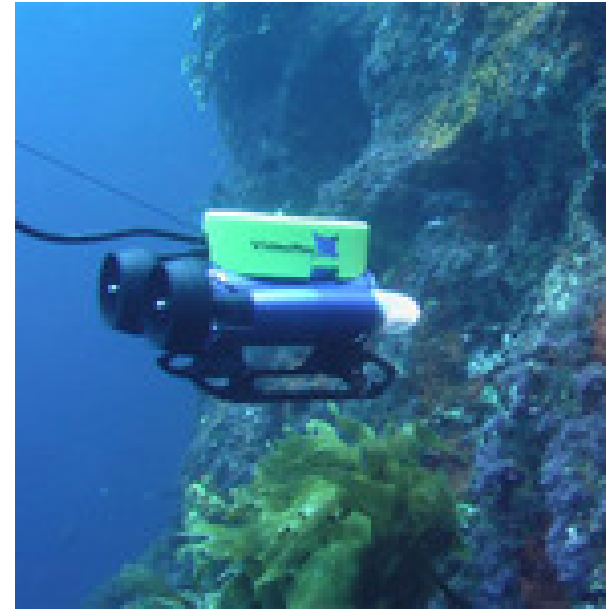
What's ^{Not} New...



The end of an era



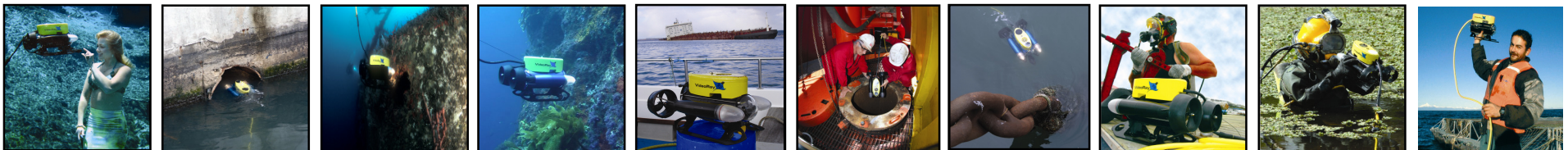
Best products available on the market...

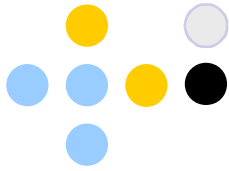


but they can't take us to where we want to be in the future.

1981 - 2010

2006 - 2010



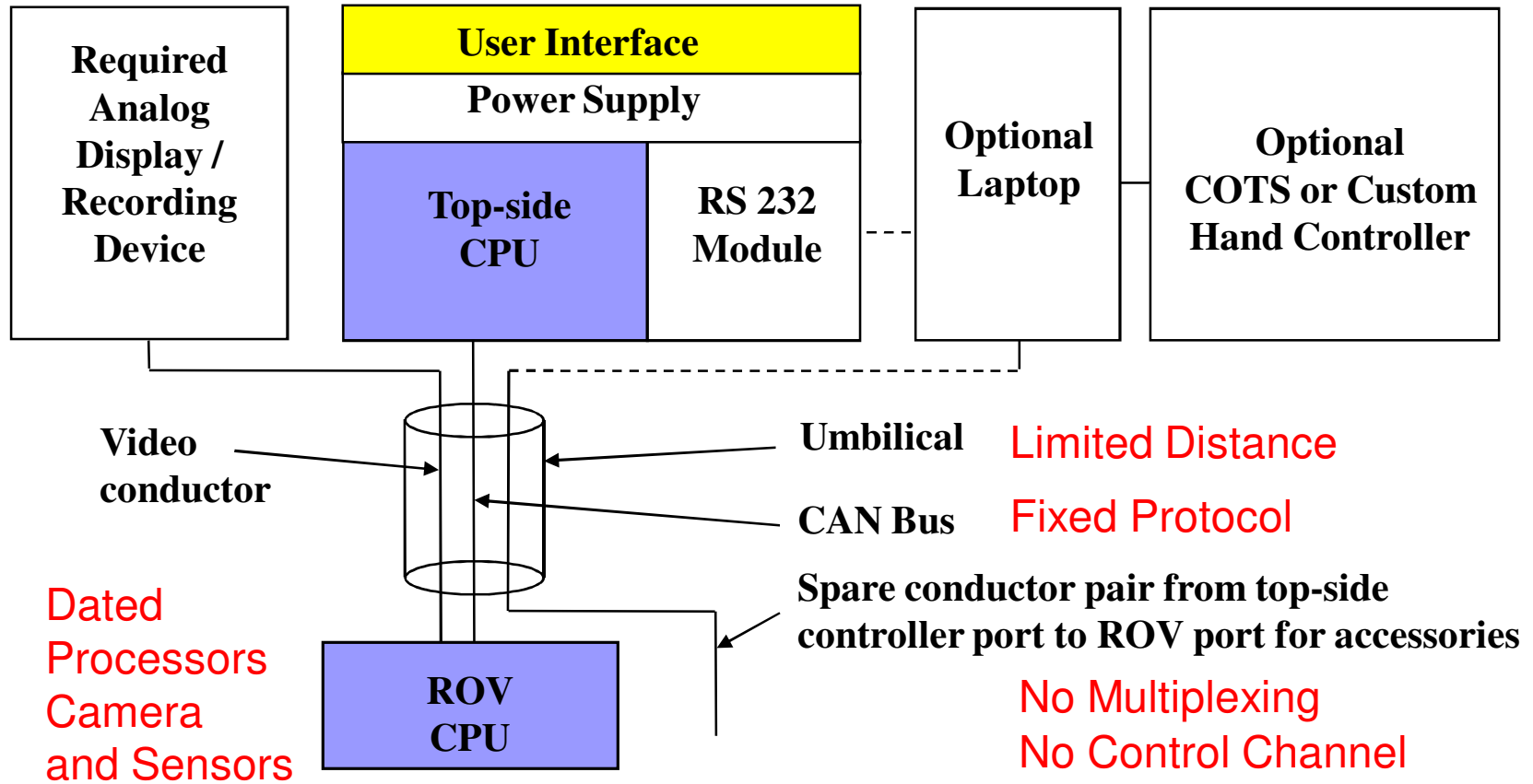


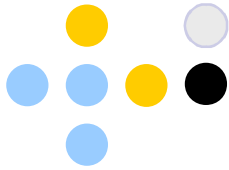
Phillips-Based Growth Limitations

Lacks Synchronization

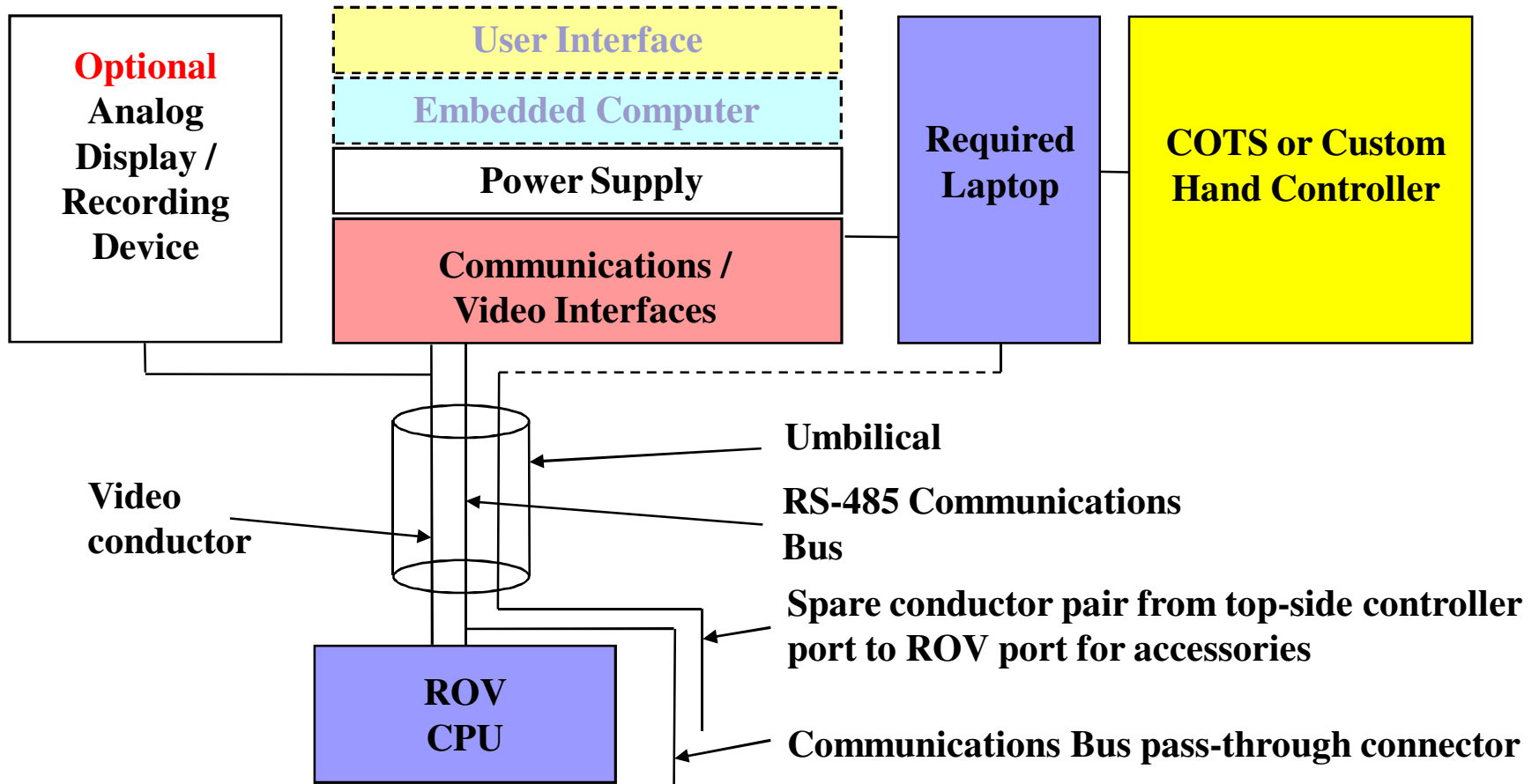
Power Max'ed Out

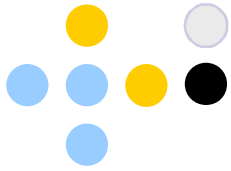
Limited Integration





Pro 4 Architecture



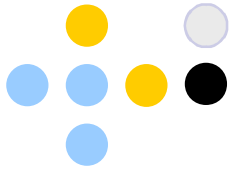


Pro 4 Foundation

Built on solid proven technologies

- Deep Blue hull structure (1,000 ft depth)
- GTO propellers / nozzles
- Cartridge seals
- Plug and play tether
- Industrial grade user control components
- COTS computer
- PC Pilot software



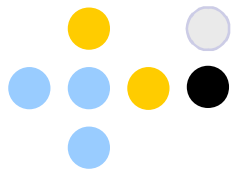


Pro 4 New Technologies

State-of-the-art processors and sensors

- New camera
- New pressure sensor
- New temperature sensor
- New humidity sensor
- KCF Smart Tether node in the ROV
 - 3-D Compass, Accelerometers, MEMS Gyros
 - Pitch
 - Roll





Pro 4 New Technologies

Highly efficient brushless motors and tuned controllers

Vertical thrust ducting

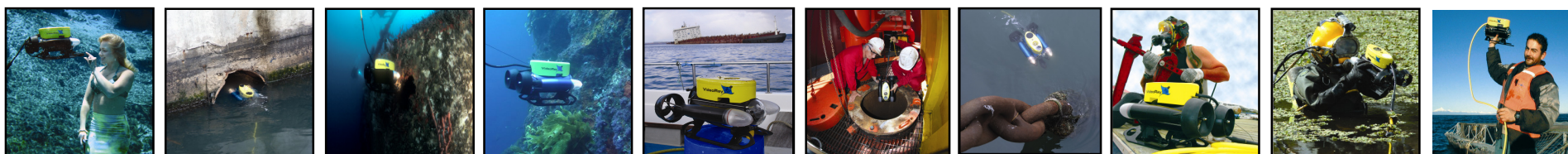
Highly efficient LED lighting

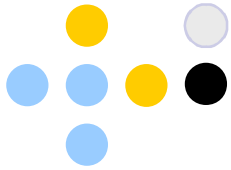
Servo controlled Tilt and Focus

New rugged smaller profile float block and skid

Tool-less ballast adjustment

Thrust centered bridle





Pro 4 New Technologies

Efficient higher voltage power supply with Line Insulation Monitor safety circuit

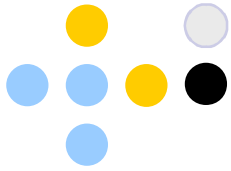
Integrated computer available for multiple applications

Cable-less topside accessory integration

- BlueView
- Tritech
- Radiation Sensor
- KCF Smart Tether
- Desert Star

Dual screen support



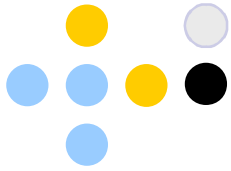


Pro 4 Technologies

VideoRay Cockpit

- Heads-up transparent instruments
- One touch operation
- Tunable gain settings
- Auto modes
- New pilot modes
- Accessory integration
- Power management
- Online multimedia documentation





Pro 4 New Technologies

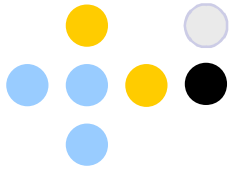
SDK with robust, extensible comms protocol

- RS-485
- Addressable (Multiplexing)
- 2,000 + feet of tether

PAMULA

- ROV “brains” to go
- Robust accessory platform

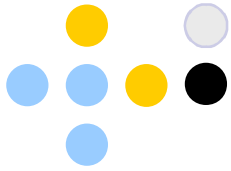




Accessory Port

Pin	Function (Pro 3 / Deep Blue)	Function (Pro 4)
1	Video -	Video -
2	Video +	Video +
3	48 VDC +, 30 Watts	24 VDC +, 30 Watts
4	Aux +	Aux +
5	Ground	Power Common (Ground)
6	Aux -	Aux -
7	Manipulator 24 VDC -	RS-485 Tx
8	Manipulator 24 VDC +	RS-485 Rx
9	12 VDC +, 6 Watts	12 VDC +, 30 Watts





Benefits

Reach

Performance

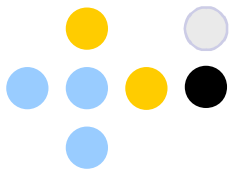
Operator experience

Imagery results

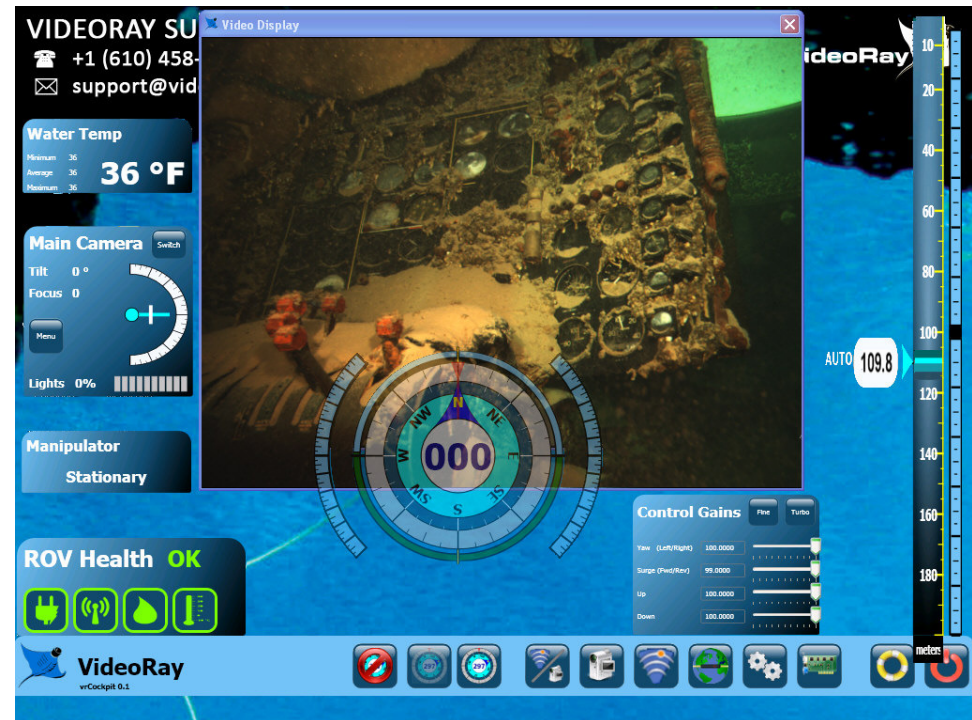
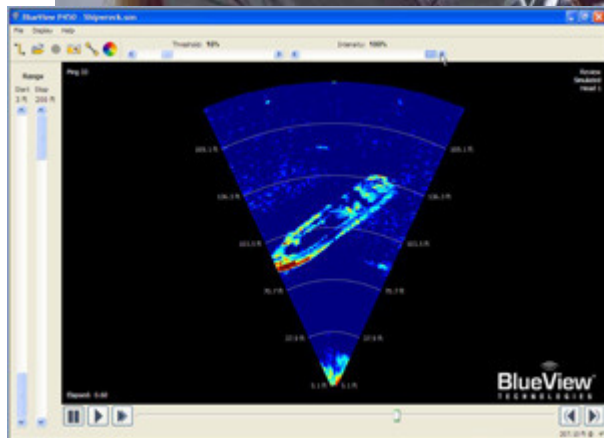
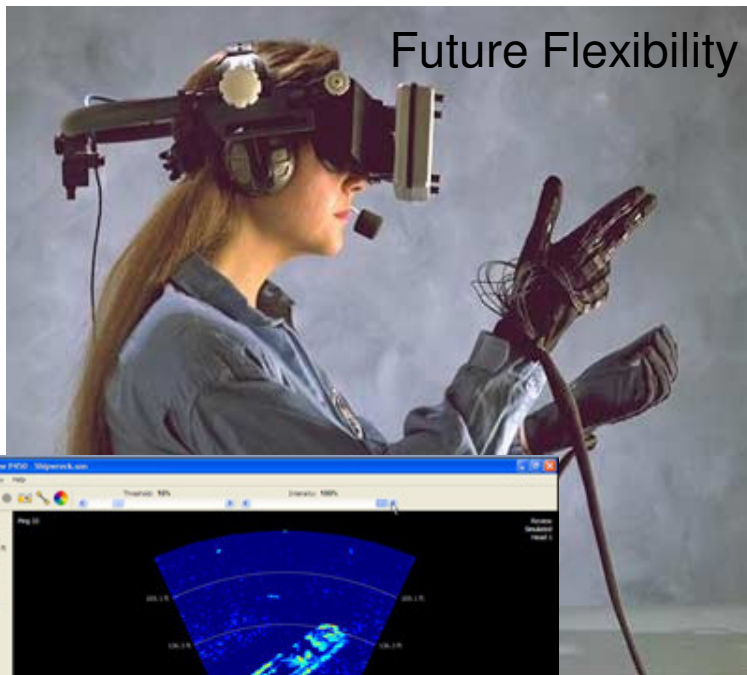
Additional data

Expansion capabilities





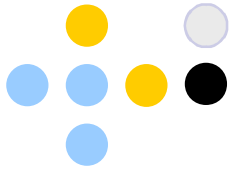
Leading to Exciting Possibilities



Tighter
Integration

Dashboard Instruments /
Diagnostics





Benefits Demonstrations

Camera

Lights

Thrust

User interface

(Auto) pilot control

Accessory integration

