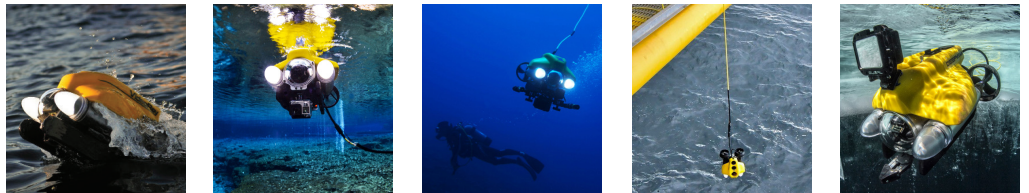


Product Data Sheet

Pro 4 IP65 BASE



The Pro 4 **IP65 Control Panel** features the same functions and capabilities of the Pro 4 Rugged ICB in a slightly different package. The Pro 4 IP65 Control Panel replaces the standard control panel and processor with equipment that meets IP65 standards, including dust and waterproof connectors. It also adds a secondary 15" daylight viewable sealed monitor, perfect for monitoring both video and accessory feeds.

The Pro 4 IP65 Control Panel is delivered with all necessary cables, software, and processors. It is compatible with all Pro 4 submersibles, tether, and most VideoRay accessories. The Pro 4 IP65 Control Panel can be upgraded to accept autonomous control, sonars, and positioning systems.

SYSTEM INFORMATION

Depth Rating	305m (1,000 ft)
System Weight	38.5 kg (85lbs)
Communications Protocol	RS-485
Cases	2 Watertight Rugged Hard Cases
Owners Manual	Hard Copy and Online Digital
Tool Kit	Basic Tool Kit and spares with complete Ballast Set
Warranty	2 Year Limited
Additional	BlueView Sonar-Ready Hardware Sunshade



SUBMERSIBLE

Length	37.5cm (14.75in)
Width	28.9cm (11.4in)
Height	22.3cm (8.75in)
Weight	6.1kg (13.5lb)
Ballast	Toolless Ballast System
Coating	Cerakoted

Propulsion

Configuration	3 thrusters (2 horizontal/1 vertical)
Motor Type	Brushless
Thrust	21lbs
Speed	4.2 knots
Propeller	100mm Propellers/65mm Propeller

Lighting

Type	Optimized LED Arrays
Number of Sources	2
Camera Coverage	Forward-looking Beam Spread covers entire range of Main Camera
Lumens	3,600 lumens per light (7,200 total)

Integrated Sensors

Accelerometer	3D Tilt Compensated Compass
Leak Indicator	Internal Temperature
Depth Sensor	MEMS Gyro
Water Temperature	System Voltage

CAMERA

Main	High Resolution - NTSC Format Color or Black & White Wide Dynamic Range Digital Slow Shutter White Balance 20+ Real Time Camera Settings
Sensitivity	
Color Mode	0.4 Lux/30 IRE @ F1.2/AGC max
B&W Mode	0.001 Lux DSS
View Angle	90° Horizontal 140° Diagonal
Vertical Tilt	180° Control

CONTROL PANEL*

Power Requirements	100-240 VAC / 50/60 Hz 800 Watts (Max Power)
Length	53cm (21in)
Width	43cm (17in)
Height	22cm (8.5in)
Weight	18kg (40lb)
Computer	Amrel Rocky IP-65 Rated PC, Intel Core i71.7 GHz Processor MIL-STD & IP Rating 810G, 461F, & IP65 VideoRay cockpit pre-installed
Software	VideoRay cockpit pre-installed
Main Display	15" Daylight Viewable IP-65 monitor Secondary: 13.3" laptop screen
Controller	IP65 Hand Controller
Recording	Integrated Recording (.WMV, .AVI) One Button Hand-Controlled Video and Still-Image Recording
Additional features	Auto-depth, auto-heading
Overlay	Date, Time, Depth, Heading, Customized text, Logo
Video Out	Digital Video

TETHER

Neutral Performance	Neutral bouyancy, smaller diameter
Standard Neutral	Neutral bouyancy
Negative Extension	Negative bouyancy

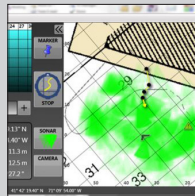
VideoRay tether is plug and play; the type and length are selected based on how you plan to use the ROV system. See above options and select.

* NOTE: Per frequently cited military requirements, the Pro 4 IP65 computer does not include Wifi or a webcam. Please contact your VideoRay account manager for more information.

ACCESSORIES For more details, visit www.videoray.com



Sonar
Blueprint
Blueview (pictured)
Tritech



Navigation & Positioning Systems
Non Acoustic Positioning
USBL



Manipulators
Single Axis
Rotating (pictured)



Auxillary Cameras
Second POV
GoPro



Non Destructive Testing (NDT)
Ultrasonic Thickness (pictured)
Cathodic Protection
Radiation Probe



Shiphull Crawler



Video Enhancement



Automation
CoPilot RI by Seebyte



Recovery and Retrieval Tool Kit