



Product Data Sheet

Expeditionary Reel

The **Expeditionary Reel** and tether, used in conjunction with the Subsea Vehicle Battery, provides unmatched mobility and efficiency. Lightweight tethers are available in either Copper or Fiber Optic versions.

SPECIFICATIONS

| | |
|--------------------|-----------------------------|
| Power Input | 2590 Battery; 12V DC |
| Operating temp | -20°C - 60°C (-4°F - 140°F) |
| Ingress protection | IP65 |
| Battery | |

FEATURES

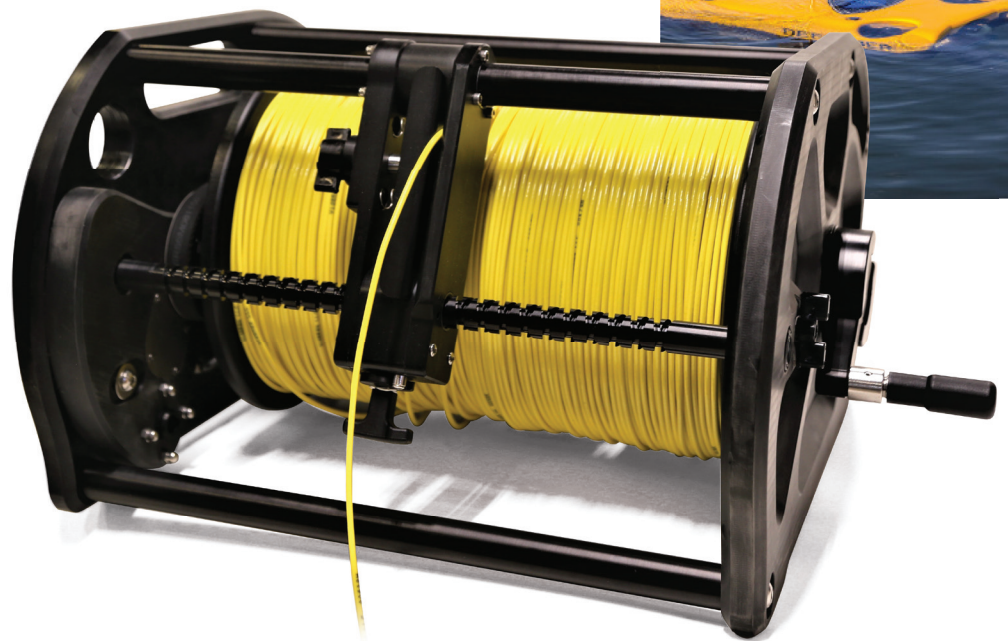
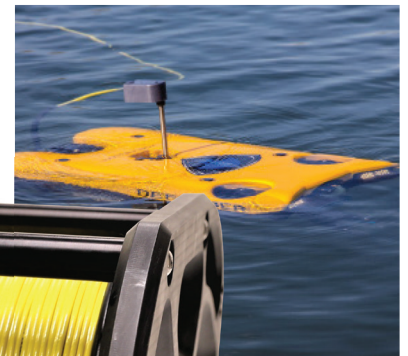
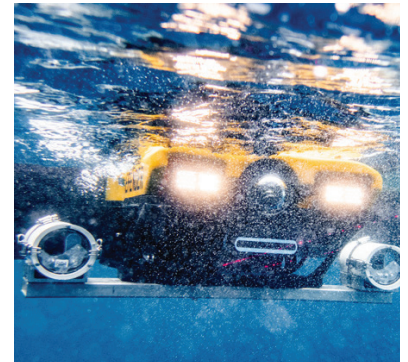
- Copper Tether up to 550m (maximum)
[3.5mm tether dia.]
- Collapsible handle
- Level wind
- Tether payout encoder

CONNECTORS

- (1) RJ45 Ethernet Connector
- (1) USB
- (1) USBL
- (1) M12
- (1) 8-pin tether connector

SIZE & WEIGHT

- 53.3 x 40.6 x 30.4cm (21 x 16 x 12in)
- 23.58kg (52 lbs)
- Delivered in a Watertight Case



Copper Communications Tether Part # 72743