

**STORM IP** is a fixed focus, underwater HD camera. It is designed to be used on Ethernet based ROV with either fibre optic or DSL type Ethernet link.

The camera outputs an H.264 or MJPEG network video stream at 1080p or 720p. The video stream can then be decoded and viewed using the customer's choice of IP video software or network video decoder.



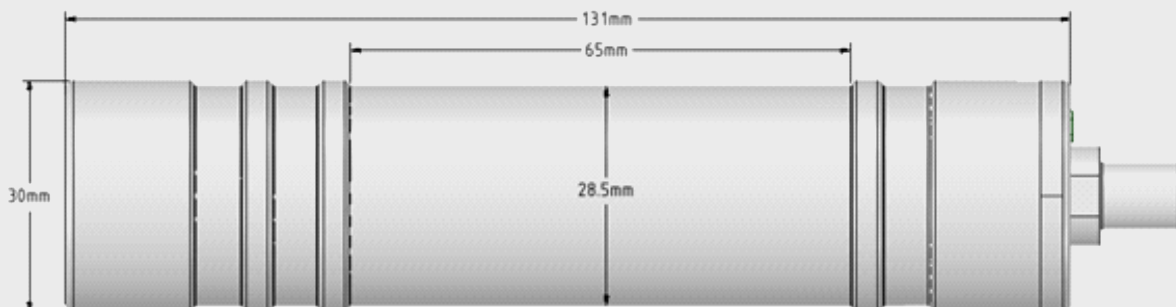
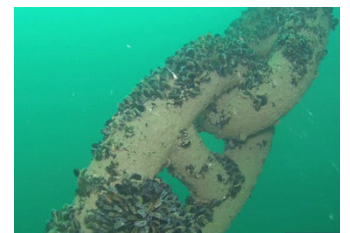
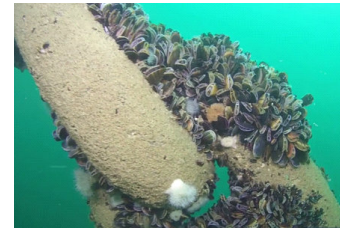
**STORM IP** from Atlantas Marine Ltd.

## SPECIFICATION

<b>Housing Material</b>	Titanium Alloy
<b>Window</b>	Sapphire Glass
<b>Lens</b>	2.97mm F4.0
<b>Diagonal Angle of View</b>	82 degrees in water
<b>Power</b>	15-32v DC @ 2.5W
<b>Weight in Air</b>	230g
<b>Weight in Water</b>	180g
<b>Length (exc. connector)</b>	131mm
<b>Diameter</b>	30mm
<b>Depth Rating</b>	2000m
<b>Connector</b>	Teledyne IE55-12
<b>Video Format</b>	H.264 / MJPEG RTSP Network Stream
<b>Video Resolution:</b>	1080P (1920x1080) / 720P (1280x720)
<b>Frame Rate:</b>	25 / 30 FPS

## FEATURES

- View & Record HD Video in real time on PC
- Depth Rated to 2000m
- Small & Light
- 1080p/720p Video resolution
- Easy to Install
- Compatible with Ethernet based ROV systems



**Mounting the Camera - STORM IP**