

Accessory Data Sheet

MSS Rotating Manipulator Arm

The **MSS Rotating Manipulator Arm** has full 360° head rotation and five interchangeable jaws for multiple tasks - anything from untangling tether snags to collecting samples to recovering objects up to 22.6 kg (50 lb). From the hand controller or control panel, you can retrieve items in confined or hazardous locations. The VideoRay ROV's camera can be tilted down to focus in on the jaw to provide a close view of the operation. When not needed, the Rotating Manipulator Arm can be easily removed. The Rotating Manipulator Arm is delivered with all 5 interchangeable heads. It can be used in conjunction with most other VideoRay attachments.

BASIC SPECIFICATIONS

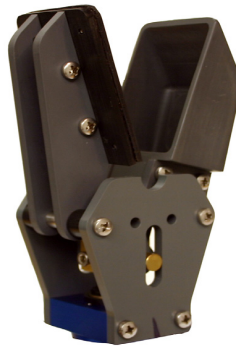
Depth Rating	1000 m (3280ft)
Breaking Strength	22.6 kg (50lb)
Head Rotation	360°
Weight in Air	1.17kg (2.58lb)
Weight in Water	0.73kg (1.62lb)
Size (w/ mount)	47 x 10.2 x 5.0 cm
	18.5 x 4.0 x 2.0 in
Closing Force	>31 PSI
Maximum Opening	
Parallel	5.7 cm (2.25 in)
V-Jaw	17.5 cm (6.875 in)
Sampler Jaw	16.5 cm (6.5 in)
Trident Jaw	15.2 cm (6 in)
Cutter Jaw	2.3 cm (0.91 in)
Sampler Jaw sample size	45 mL (1.5 oz)
Cutter max cut diameter	1.9 cm (0.75 in)



Parallel Jaw



V-Jaw



Sampler Jaw



Trident Jaw



Cutter Jaw