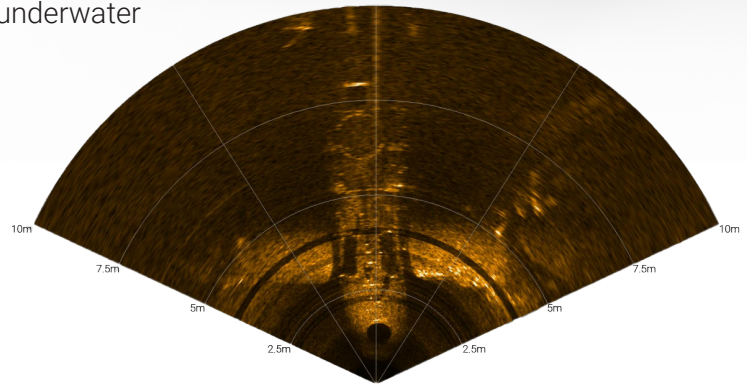


BluePrint Oculus Sonar



The **Oculus M series Multibeam Sonars** are a new generation of imaging sonar, designed for use across a wide variety of underwater applications.

Their small form factor, weighing less than 400g in water, and dual frequency capabilities make them ideally suited for deployment on micro-sized platforms, while their rugged construction also makes them an excellent choice for subsea infrastructure.



MODEL	Oculus M750d	Oculus M1200d	Oculus M3000d
OPERATING FREQUENCY	750kHz / 1.2MHz	1.2MHz / 2.1 MHz	1.2MHz / 3.0MHz
RANGE (MAXIMUM)	120m / 40m (393ft / 131ft)	40m / 10m	30m / 5m
RANGE (MINIMUM)	0.1m (0.3 ft)	0.1m	0.1m
RANGE RESOLUTION	4mm / 2.5mm	2.5mm / 2.5mm	2.5mm / 2mm
HORIZONTAL APERTURE	130° / 130°	130° / 60°	130° / 40°
VERTICAL APERTURE	20° / 20°	20° / 12°	20° / 20°