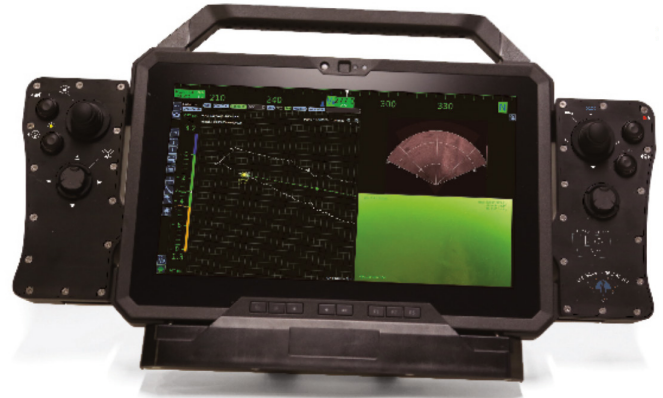


Mission Specialist Expeditionary Splashproof Controller

The **Mission Specialist Expeditionary Splashproof Controller** is a lightweight all-in-one user interface that allows for a more scalable work environment when integrated. The Controller pods detach from tablet for integration with the Workhorse Splashproof Console. The Mission Specialist Expeditionary Splashproof Controller is the ideal solution for operators that are limited on workspace or need mobility while operating a Mission Specialist vehicle.



Part #73424



Specifications

Power input: 48V DC @ 80 Watts peak



Performance

Processor: Dell 7220 8th Generation Intel® Core™ i7-8665U, 8 MB Cache, 4 Core, 1.90 Ghz to 4.80 GHz, vPro 8th

RAM: 16GB

Drive: SSD~500 GB



Features

- Modular quick release side pod controllers.
- Carry handle
- Kick stand
- Neck strap



Connectors

- (1) Fisher Ultimate M12
- (1) USB type A



Standard Controller Configuration

- (2) 2 axis joystick with center push
- (2) 1 axis joystick
- (6) Momentary buttons
- (2) D-pad (5 momentary push)



Size & Weight

Controller

- 48.26 x 27.9 x 8.89 cm (19 x 11 x 3.5 in)
- 3.40 kg (7.5 lbs out of the case)

Controller & Storage Case:

- 55.8 x 35.5 x 19 cm (21.96 x 13.97 x 7.49 in)
- 7.48 kg (16.5 lbs full in case assembly)

Operating Temperature:

- 20 °C–60 °C (68 °F–140 °F)
- Ingress Protection: IP65 rated