

## Mission Specialist Ally

The Mission Specialist Ally is designed for optimal power and lift, all within a compact design. Boasting a spring-loaded vertical manipulator and offering a choice between shore power or Subsea Battery power options, the Mission Specialist Ally paves the way for progression towards the Mission Specialist Defender and upcoming configurations in the Mission Specialist lineup.



### Submersible Information

**Depth Rating:** 300 m (984 ft)  
**Weight in Air:** 13.6 kg (30lb) - No Payloads  
 15.8 kg (34.8 lb) - W/ Oculus 750 Sonar, A50 DVL,  
 Reach Alpha Manipulator  
**Manipulator:** 90 - 180 Degree Spring Loaded Manipulator



### Propulsion

**2 Horizontal Thrusters:** 16.8 kg / 37 lbs, 4 Knots  
**2 Vertical Thrusters:** 9.5 kg / 21 lbs, 1.5 Knots  
**Lateral Thrust:** 6.1 kg / 13.5 lbs, 1 Knot



### Ultra 4k Smart Camera

With the ability to run multiple neural networks and process high-resolution data, this camera is not just a visual device but an intelligent partner capable of advanced image processing and autonomous decision-making.

**Processor:** NVIDIA Jetson Orin NX  
**Image Quality:** 12MP Resolution (4.7k)  
 150ms Latency  
 Up to 60 Frames per Second  
 3.5 - 15Mbps Bandwidth

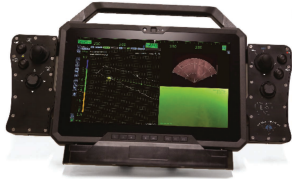
**Features:** 1 TB SSD  
 Auto-White Balance  
 Electronic Focus  
 Image Unwarp  
 Digital Pan, Tilt, and Zoom  
 Color Enhancement

Spring Loaded Manipulator





## Controller Options



Part Number: 73424

### Expeditionary Splashproof Controller

A lightweight all-in-one user tablet that allows for a more scalable work environment. *(Requires the Expeditionary Reel and Subsea Batteries.)*

#### Features

- Modular quick release side pod controllers
- Carry handle
- Kickstand
- Neck strap

#### Standard Controller Configuration

- (2) 2 Axis joystick with center push
- (2) 1 Axis thumbwheel
- (6) Momentary buttons
- (2) D-pad (5 momentary push)



Part Number: 73394

### Workhorse Splashproof Controller

A power and communications controller designed to protect connector ports from becoming water damaged. Includes the **Expeditionary Splashproof Controller**. *(Requires shore power.)*

#### Features

- Integral Vesa 75 mount for HMI mounting
- 2X Accessory USB input
- 1X USBL bulkhead

#### Power

- Power input: Universal Input 85-264, VAC 47-440 Hz  
2.4 kW Max Power (chassis)
- Power output: 2.3 kW Max at 400V (90%) efficiency  
48V (HMI interface)



Part Number: 73423

### Workhorse Control Console

A complete user interface with a built-in touch screen that supplies power and communications to the vehicle. *(Requires shore power.)*

#### Features

- Integral computer
- HD High Brite Monitor
- Industrial Programmable Hand Controller
- Integral Line Isolation Monitor (LIM)

#### Power

- Power input: Universal Input 85-264, VAC 47-440 Hz  
2.4 kW Max Power (chassis)
- Power output: 2.3 kW Max at 400V (90%) efficiency



## Float Options



### Rounded Float

The rounded float is essential for tasks requiring access to shore power and prioritizing maneuverability in tight spaces. *(Batteries are not compatible)*

**Vehicle Size with Float:** L 64.1 x 30.5 cm Diameter  
(L 25.25 x 12 in Diameter)



### Squared Float

The Squared Float is crucial for handling heavier payloads and utilizing the Subsea Batteries.

**Vehicle Size with Float/Batteries:** L 64.1 x H 38.1 x W 30.5 cm  
(L 25.25 x H 15 x W 12 in)